

Skystar™

[Roll Shades for Horizontal Skylight Windows]

RETAIL PRICE LIST

January 2025



Solar Solutions™

When the sun is a problem... **solar solutions** is the answer

Table of Contents

[Roll Shades for Horizontal Skylight Windows]

Fabric Groups & Page References	2
General Information & Options Pricing.....	4 through 7
Warranty	8
Skystar Pricing Charts	9 through 28
Fabric Openness Guide Card	Solar Solutions Sample Book

PATTERN NAME	Price Group	Page No.	Max. Width	Openness Factor	Fabric Type	Exterior Warranty	Deck No.
BALMORAL BLACKOUT	14	23	118"	N/A	Blackout	N/A	17
BALMORAL PRIVACY	11	20	118"	N/A	Decorative	N/A	17
BASIC BLACKOUT	1	10	72"	N/A	Blackout	N/A	8
BASKETWEAVE PLUS 3%	6	15	118"	3%	Solar	N/A	5
BASKETWEAVE PLUS 5%	5	14	118"	5%	Solar	N/A	see deck 5*
C.O.M./SPECIAL ORDER	0	9	N/A	N/A	N/A	N/A	N/A
DARWIN BLACKOUT	11	20	110"	N/A	Blackout	N/A	21
ELEMENTAL	9	18	94"	N/A	Decorative	N/A	26
E-SCREEN 0.5%	11	20	122"	0.5%	Solar	5 years	see deck 11*
E-SCREEN 1%	12	21	122"	1%	Solar	5 years	see deck 11*
E-SCREEN 3%	10	19	122"	3%	Solar	5 years	11
E-SCREEN 5%	9	18	122"	5%	Solar	5 years	see deck 11*
E-SCREEN 10%	9	18	122"	10%	Solar	5 years	see deck 11*
E-SCREEN KOOLBLACK 0.5%	18	27	122"	0.5%	Solar	5 years	see deck 11*
E-SCREEN KOOLBLACK 1%	17	26	122"	1%	Solar	5 years	see deck 11*
E-SCREEN KOOLBLACK 3%	17	26	122"	3%	Solar	5 years	11
E-SCREEN KOOLBLACK 5%	16	25	122"	5%	Solar	5 years	see deck 11*
E-SCREEN KOOLBLACK 10%	16	25	122"	10%	Solar	5 years	see deck 11*
FLOCKÉ	19	28	94"	N/A	Blackout	N/A	16
FUN FIBER	2	11	72"	N/A	Decorative	N/A	26
HAMPTON BLACKOUT	15	24	110"	N/A	Blackout	N/A	22
HILLCREST	5	14	110"	N/A	Decorative	N/A	25
ICE	8	17	114"	N/A	Decorative	N/A	24
KLEENSCREEN	5	14	118"	N/A	Blackout	N/A	4
LUCCA	6	15	118"	N/A	Blackout	N/A	8
MERIDIAN	6	15	118"	N/A	Blackout	N/A	9
MIA BLACKOUT	16	25	94"	N/A	Blackout	N/A	18
MIA PRIVACY	13	22	94"	N/A	Decorative	N/A	18
MIAMI BLACKOUT	14	23	110"	N/A	Blackout	N/A	21 & 22

Table of Contents

[Roll Shades for Horizontal Skylight Windows]

PATTERN NAME	Price Group	Page No.	Max. Width	Openness Factor	Fabric Type	Exterior Warranty	Deck No.
MOMBASSA BLACKOUT	18	27	118"	N/A	Blackout	N/A	21
MOMBASSA PRIVACY	15	24	118"	N/A	Decorative	N/A	19 & 20
M-SCREEN 3%	10	19	122"	3%	Solar	5 years	12
NANO 95	6	15	126"	5%	Solar Exterior	15 years	contact us for details
NATAL BLACKOUT	13	22	98"	N/A	Blackout	N/A	21
NATTE 5%	14	23	122"	5%	Solar Exterior	10 years	contact us for details
NEW PRIVACY	1	10	78"	N/A	Decorative	N/A	26
PALM BEACH BLACKOUT	11	20	118"	N/A	Blackout	N/A	9
PARIS SHEER	15	24	118"	N/A	Decorative	N/A	19 & 20
SALVADOR SHEER	13	22	94"	N/A	Decorative	N/A	19 & 20
SHEERWEAVE 2360	9	18	126"	10%	Solar	5 years	see deck 1*
SHEERWEAVE 2390	10	19	126"	5%	Solar	5 years	see deck 1*
SHEERWEAVE 2410	10	19	126"	3%	Solar	5 years	1
SHEERWEAVE 2500	12	21	126"	1%	Solar	5 years	see deck 1*
SHEERWEAVE 4400	10	19	126"	3%	Solar	5 years	2
SHEERWEAVE 4800	12	21	126"	1%	Solar	5 years	2
SHEERWEAVE 5000	10	19	98"	Varies (3%-5%)	Solar	5 years	23
SHEERWEAVE 7001	15	24	118"	N/A	Blackout	N/A	3
SHEERWEAVE 7400	11	20	118"	N/A	Blackout	N/A	14
SHEERWEAVE 7450	6	15	118"	N/A	Decorative	N/A	14
SHEERWEAVE 7800	11	20	118"	N/A	Blackout	N/A	13
SHEERWEAVE 7850	11	20	118"	N/A	Decorative	N/A	13
SNOW	14	23	114"	N/A	Blackout	N/A	24
SOLIDITY	8	17	110"	N/A	Blackout	N/A	25
SPRING	8	17	114"	N/A	Decorative	N/A	24
S-SCREEN 4%	12	21	122"	4%	Solar	5 years	10
SUNTEX 95 & 95 MATTE	6	15	126"	5%	Solar Exterior	10 years	contact us for details
TRELLIS	7	16	82"	N/A	Decorative	N/A	26
TULIP	7	16	82"	N/A	Decorative	N/A	26
TWILL 1%	6	15	118"	1%	Solar	N/A	6
TWILL 3%	5	14	118"	3%	Solar	N/A	see deck 6*
VIZELA	16	25	94"	N/A	Decorative	N/A	16
VX SCREEN 3101 1%	4	13	118"	1%	Solar	N/A	see deck 7*
VX SCREEN 3103 3%	3	12	118"	3%	Solar	N/A	7
VX SCREEN 3105 5%	3	12	118"	5%	Solar	N/A	see deck 7*
WANING	15	24	114"	N/A	Blackout	N/A	24
WAXING	11	20	114"	N/A	Decorative	N/A	24
WINCHESTER SHEER	15	24	118"	N/A	Decorative	N/A	19 & 20
WINTER	14	23	114"	N/A	Blackout	N/A	24
ZORA TWILIGHT	8	17	126"	N/A	Blackout	N/A	15

*NOTE: We have a fabric openness guide card attached to our Solar Solutions Sample Book. Please refer to this card if you'd like to see or compare the openness of any solar fabrics.

GENERAL PRICING INFORMATION

The **SKYSTAR standard price charts** on the following pages **include all installation hardware**. The **601A** (48" x 48") **shade** comes with a Sonesse 400 Series RTS Motor, two 4040 Fascias, 4"H x 4"D (one for the top, one for the bottom) and two Side Channels for each side. The **601B** (72" x 72") **shade** comes with a Sonesse 500 Series RTS Motor, two 5050 Headboxes, 5"H x 4¾"D (one for the top, one for the bottom) and two Side Channels for each side. An Ultra-Quiet version can be specified for either motor type. The 500 Series Motor can also be specified in a network version for home automation. Both of these optional upgrades are priced on the following pages.

FASCIA

Standard Colors: Anodized Clear, Anodized Black, and White.

Custom Colors: Call for pricing.

PRICING



4040 COVERED FASCIA

4040 Fascia (4"H x 4"D)

- Provided with the 601A Skystar Shade.

HEADBOX

Standard Colors: Anodized Clear, Anodized Black, and White.

Custom Colors: Call for pricing.

PRICING



5050 HEADBOX

5050 Headbox (5"H x 4¾"D)

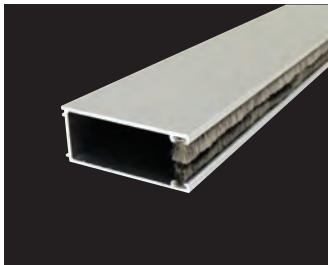
- Provided with the 601B Skystar Shade.

LIGHT CONTROL CHANNELS

Standard Colors: Anodized Clear, Anodized Black, and White.

Custom Colors: Call for pricing.

PRICING



SIDE CHANNEL

2½" Side Channel (for blackout systems)

- No Charge (included with shade).

Side Channel Brushes (for better light control)

- No charge (included with shade).

DETAILS

- Designer look.
- Shadow line reveal across face.
- Matching shadow line across end caps.
- Covered top prevents dust line.
- Built-in bracket channel for easy shade install.
- Shades up to 48" wide by 48" long.

- Covers shade completely.
- Top prevents dust line.
- Shades up to 72" wide by 72" long.

- The side channels prevent light from coming around the side of the shades.
- Creates a full blackout room with no light leakage.
- Return cables are hidden inside the channels.
- The roll shade fabric rides on the channel brushes. This prevents the fabric from rubbing on the aluminum channels, thus protecting the fabric from wear and tear.

MOTORIZATION

NO NEED TO WORRY!

We will help you choose from a wide selection of motorization and control options.

24V DC QUIET MOTORS are low voltage motors that come with a transformer and are plugged into an outlet or hardwired directly into a low voltage panel. These motors are available with a variety of control options including Remote Controls, Wall Switches, RS485 Network/Home Automation, Smart Phones or Tablet Apps. They have have a lifting capacity of 17 to 35 lbs and are capable of operating medium to very large shades. Interior applications only.

120V HARDWIRED QUIET & ULTRA QUIET MOTORS can be plugged into an outlet or hardwired directly into the home/building's electrical system. These motor systems are most widely used because of their versatility. They can be operated by a variety of control options including Remote Controls, Wall Switches, RS 232/485 Network/Home Automation, Smart Phones or Tablet Apps. These are very powerful motors that can lift any size shade. Interior and Exterior applications.

HOME AUTOMATION MOTORIZATION: Our motors (or any motor you specify) can be controlled by any Home Automation System by using an appropriate Interface. For help with Home Automation or any motorization questions, contact our experienced Technical Support Department at 800.828.2500.

All shade motors and controls are completely assembled and pre-programmed at our factory.

MOTOR PRICING

MOTORIZED LIFTING SYSTEMS

For your convenience and to be certain you have included everything required for a motorized installation in your pricing to your customer, we have bundled the price of the motor along with all of the other parts and pieces that are necessary into an all-inclusive MOTOR ASSEMBLY price for each type of motor.

Sonesse 400 Series - Heavy Duty Motors (for SKYSTAR 601A)

- 120V AC Motors.
- Includes 10 ft. integrated pigtail cord.
- Can be hardwired or plugged in.
- Available as RTS (Remote) motors.
The Remote Control Motors are included in the price of the Skystar 601A shade and must be specified at the time of the order.
- Remote Control Motors requires a Remote Controller of your choice. Add the cost of the controller to the shade.
- \$50 surcharge for Zigbee.

– Sonesse 404 Motor

- 120V AC, 4 Nm Motor.
- Minimum shade size is 25" wide.
- Lifts up to 34 lbs.
- Speed RPM 36.
- Sound level ≤ 45 dBA

– Sonesse 406 Motor

- 120V AC, 6 Nm Motor.
- Minimum shade size is 26¼" wide.
- Lifts up to 52 lbs.
- Speed RPM 24.
- Sound level ≤ 45 dBA

Sonesse 500 Series - Heavy Duty Motors (for SKYSTAR 601B)

- 120V AC Motors.
- Includes 6½ ft. pigtail cord.
- Can be hardwired or plugged in.
- Available as RTS (Remote) and Network motors.
The Remote Control Motors are included in the price of the Skystar 601B shade and must be specified at the time of the order.
- Remote Control Motors requires a Remote Controller of your choice. Add the cost of the controller to the shade.
- \$200.00 surcharge for a Network Motor.

– Sonesse 506 Motor

- 120V AC, 6 Nm Motor.
- Minimum shade size is 32¾" wide.
- Lifts up to 52 lbs.
- Speed RPM 32.
- Sound level ≤ 45 dBA

Sonesse 500 Series - Heavy Duty Motors (for SKYSTAR 601B - continued)

– Sonesse 510 Motor

- 120V AC, 10 Nm Motor.
- Minimum shade size is 32¾" wide.
- Lifts up to 87 lbs.
- Speed RPM 32.
- Sound level ≤ 47 dBA

Note: Most motorized shade assemblies require about 3½" of depth for installation.

Sonesse 500 Series (Ultra Quiet) Motors - AC (for SKYSTAR 601B)

- 120V AC Motors.
- Includes 9½ ft. pigtail cord.
- Can be hardwired or plugged in.
- Available as RTS (Remote) and Network motors.
- Remote Control Motors requires a Remote Controller of your choice. Add the cost of the controller to the shade.
- \$200.00 surcharge for a Network Motor.
- \$210.00 for a *Ultra Quiet Motor*.
(RTS min. shade size is 39"; RS485 min. shade size is 40½")

– Sonesse 506 (Ultra Quiet) Motor

- 120V AC, 6 Nm Motor.
- Minimum shade size is 39" wide.
- Lifts up to 52 lbs.
- Speed RPM 24.
- Sound level ≤ 38 dBA

SOMFY REMOTE CONTROLLERS

- **Single-Channel Remote Controller (handheld):** \$150.00 each.
- **Single-Channel Remote Controller (wall mount):** \$334.00 each.
Can operate a single shade or a single group of shades.

- **Five-Channel Remote Controller (handheld):** \$186.00 each.
- **Five-Channel Remote Controller (wall mount):** \$350.00 each.
Can operate 5 individual shades, or 5 groups of shades, and can also operate all shades in a group, or all groups.

Single-Channel and Five-Channel Remote Controllers are available in white or black.

- **Sixteen-Channel Remote Controller (handheld):** \$594.00 each.
Can operate 16 individual shades, or 16 groups of shades, and can also operate all shades in a group, or all groups.

Sixteen-Channel Remote Controllers are available in white or silver.

NOTE: These controllers are radio signal devices, which means they do not have to be aimed at a receiver. They will work as long as they are within range of the motor assembly, i.e. within 65 feet, which covers most houses.

MOTOR PRICING

SOMFY NETWORK CONTROLS

- **SDN Intelligent Switch:** A programmable switch for network motors that allows you to set scenes.
 - **A Six-Scene option:** \$336.00
 - **A Eight-Scene option:** \$360.00Programmable switch available in white or black.
- **RTS to SDN Interface:** \$240.00
A device that will allow one to control a network motor with a RTS remote controller or RTS wall mount switch.

SOMFY NETWORK ACCESSORIES

- **Sixteen-Channel Universal RTS Interface:** \$1,100.00 each.
The interface is used to communicate between home automation system and motor/controls. It is capable of individual or group control. Up to 16 channels are available.

Converts IR, RS232, RS485 to RTS to control Somfy RF motors.
- **RTS Repeater:** \$482.00 each.
The Repeater extends the range of all Somfy RTS controllers. Normal signal range is approximately 60 feet. RTS repeater extends range an additional 70 feet.

Simply plugs into any standard 110V AC electrical outlet. Should be placed at least halfway between sending device (remote control/wall switch/RTS interface) and the motor.

Features an LED light that confirms the unit is receiving the signal. No programming needed.

SOMFY’S ADDITIONAL MOTORIZATION OPTIONS

- **TaHoma® RTS/Zigbee Interface:** \$636.00 each.
A smart home experience. Allows you to operate your motorized shades with your favorite mobile device/or tablet interface, whether you are at home or not, or integrate with third-party systems. TaHoma works with Google Assistant and Amazon Alexa, allowing for natural voice commands to control shades.
- **TaHoma® Switch:** \$420.00 each.
The TaHoma switch can control up to 60 Zigbee products and 40 channels of RTS motorized products. The app enables integration of third-party Zigbee products and complete access from anywhere.
- **TaHoma® Switch Ethernet Adaptor:** \$64.00 each.
- **TaHoma® Switch with Ethernet Adaptor:** \$472.00 each.
The Ethernet Adaptor connects the TaHoma switch directly to the network for users with under-performing WiFi.
- **Smart Plug Zigbee:** \$96.00 each.
The Smart Plug extends the Zigbee radio range for motorized window coverings.

SOMFY’S ADDITIONAL MOTORIZATION OPTIONS (continued)

- **Ysia 1 Channel Remote Control Zigbee:** \$136.00 each.
- **Ysia 5 Channel Remote Control Zigbee:** \$180.00 each.

Ysia offers a simple, direct control for Zigbee motors. Available in a white finish.
- **Timers:**
 - **Chronis RTS:** \$472.00 each.
Allows you to operate your motorized shades at any specific time of the day.
 - **Sunis RTS (Sun Sensor):** \$516.00 each.
Allows your motorized shades to automatically rise and lower as the sun moves across the sky.

Plug-in Cords

Plug-in cords eliminate the need for an electrician when using remote control motors.

CORDS (with molded 90° NEMA plug)				
Length of cord	3 feet	6 feet	12 feet	24 feet
Price	\$70	\$80	\$94	\$148

After Market Plug (attached to pigtail): \$35.00 each.

Motor Tester

Used to test a motorized system without the aid of an electrician. Highly recommended for every installer.

- \$230.00 each.

=====

If you need:

- Contract Pricing.
- Lutron Motors.
- Retrofit Lutron or Customer’s Own Motors.
- 4-Wire Standard Motor available as Special Order.
 - To integrate a shade into an electronic Home Automation System.
- Our In-House Automation Specialist.

Call us at 800.828.2500.

=====

PLEASE NOTE: RUSH ORDERS
Rush orders will incur **a surcharge of 25%.**

SKYSTAR™

FIVE YEAR WARRANTY

Fabritec guarantees SKYSTAR™ roll shades to be free of fabrication and material defects for up to five years, provided the product is properly installed and is owned by the original purchaser at the time of the claim. This warranty is limited to rework or replacement only, and Fabritec retains the right to determine how a fabrication defect will be corrected. Replacements will be made to the original specifications only. Standard production lead times will apply.

This warranty does not cover conditions or damage resulting from the following:

- Misuse or abuse of the product
- Any damage resulting from improper installation
- Weather damage
- Normal wear and tear

This warranty does not cover collateral costs such as installation and shipping. If you should have a problem with a product, contact your Sales Services Representative with a description of the problem and a request for a Return Authorization. No merchandise return will be accepted without a Return Authorization.

FABRITEC Motor Warranty

FIVE YEAR WARRANTY

Fabritec guarantees the performance of all of its motors for a period of five years. This warranty does not apply in cases of abuse, either intentional or unintentional, including failure to wire a motor to factory specifications. Any claim must be made by the original purchaser.

Defective motors must be returned for inspection via a trackable shipping method.

This warranty does not cover collateral costs such as installation and shipping. If you should have a problem with a product, contact your Sales Services Representative with a description of the problem and a request for a Return Authorization. No merchandise return will be accepted without a Return Authorization.



fabritec, llc. | 7531 Coldwater Canyon Ave | North Hollywood | CA, 91605 | 818 503 8300 (tel) | 818 503 8360 (fax)

C.O.M./SPECIAL ORDER SHADE PRICING

Pattern Name	Max. Width	Openness Factor	Can be Railroaded	Can be Seamed
C.O.M./SPECIAL ORDER	-	-	-	-

- Prices include the following:
- The **601A (48" x 48") Skystar** shade comes with a Sonesse 400 Series RTS Motor, two 4040 Fascias (one for the top, one for the bottom) and two Side Channels for each side.
 - The **601B (72" x 72") Skystar** shade comes with a Sonesse 500 Series RTS Motor, two 5050 Headboxes (one for the top, one for the bottom) and two Side Channels for each side.

		Width in inches								
		24"	30	36	42	48	54	60	66	72
Height in inches	36"	2162	2248	2338	2436	2526	2616	2704	2816	2898
	42	2188	2282	2374	2476	2570	2664	2758	2872	2956
	48	2218	2314	2412	2518	2614	2712	2810	2928	3014
	54	2246	2348	2448	2558	2660	2760	2862	2984	3072
	60	2276	2380	2486	2598	2704	2808	2914	3040	3130
	66	2304	2414	2522	2640	2748	2858	2966	3094	3190
	72	2334	2446	2560	2680	2792	2906	3018	3150	3248

Note: Outlined areas above are for Skystar 601A which utilizes the Sonesse 400 Series Motors.
For Contract Pricing, call us at 800.828.2500.

GROUP 1 SHADE PRICING

Pattern Name	Max. Width	Openness Factor	Can be Railroaded	Can be Seamed
BASIC BLACKOUT	72"	N/A	N/A	N/A
NEW PRIVACY	78"	N/A	N/A	N/A

- Prices include the following:
- The **601A (48" x 48") Skystar** shade comes with a Sonesse 400 Series RTS Motor, two 4040 Fascias (one for the top, one for the bottom) and two Side Channels for each side.
 - The **601B (72" x 72") Skystar** shade comes with a Sonesse 500 Series RTS Motor, two 5050 Headboxes (one for the top, one for the bottom) and two Side Channels for each side.

		Width in inches								
		24"	30	36	42	48	54	60	66	72
Height in inches	36"	2162	2248	2338	2436	2526	2616	2704	2816	2898
	42	2188	2282	2374	2476	2570	2664	2758	2872	2956
	48	2218	2314	2412	2518	2614	2712	2810	2928	3014
	54	2246	2348	2448	2558	2660	2760	2862	2984	3072
	60	2276	2380	2486	2598	2704	2808	2914	3040	3130
	66	2304	2414	2522	2640	2748	2858	2966	3094	3190
	72	2334	2446	2560	2680	2792	2906	3018	3150	3248

Note: Outlined areas above are for Skystar 601A which utilizes the Sonesse 400 Series Motors.
For Contract Pricing, call us at 800.828.2500.

GROUP 2 SHADE PRICING

Pattern Name	Max. Width	Openness Factor	Can be Railroaded	Can be Seamed
FUN FIBER	72"	N/A	N/A	N/A

- Prices include the following:
- The **601A (48" x 48") Skystar** shade comes with a Sonesse 400 Series RTS Motor, two 4040 Fascias (one for the top, one for the bottom) and two Side Channels for each side.
 - The **601B (72" x 72") Skystar** shade comes with a Sonesse 500 Series RTS Motor, two 5050 Headboxes (one for the top, one for the bottom) and two Side Channels for each side.

		Width in inches								
		24"	30	36	42	48	54	60	66	72
Height in inches	36"	2180	2272	2366	2470	2564	2648	2730	2838	2918
	42	2210	2308	2408	2514	2614	2702	2786	2896	2980
	48	2242	2344	2448	2560	2664	2754	2840	2954	3040
	54	2272	2380	2488	2604	2712	2808	2896	3012	3102
	60	2304	2418	2530	2650	2762	2860	2952	3070	3162
	66	2336	2454	2570	2696	2812	2914	3008	3128	3224
	72	2368	2490	2612	2740	2862	2966	3064	3188	3284

Note: Outlined areas above are for Skystar 601A which utilizes the Sonesse 400 Series Motors.
For Contract Pricing, call us at 800.828.2500.

GROUP 3 SHADE PRICING

Pattern Name	Max. Width	Openness Factor	Can be Railroaded	Can be Seamed
VX SCREEN 3103	118"	3%	N/A	N/A
VX SCREEN 3105	118"	5%	N/A	N/A

Prices include the following:

- The **601A (48" x 48") Skystar** shade comes with a Sonesse 400 Series RTS Motor, two 4040 Fascias (one for the top, one for the bottom) and two Side Channels for each side.
- The **601B (72" x 72") Skystar** shade comes with a Sonesse 500 Series RTS Motor, two 5050 Headboxes (one for the top, one for the bottom) and two Side Channels for each side.

		Width in inches								
		24"	30	36	42	48	54	60	66	72
Height in inches	36"	2168	2256	2346	2446	2536	2628	2718	2836	2920
	42	2194	2290	2384	2488	2582	2678	2774	2894	2982
	48	2224	2324	2422	2530	2628	2728	2828	2952	3042
	54	2254	2358	2460	2572	2674	2778	2882	3010	3104
	60	2284	2392	2498	2614	2722	2828	2936	3070	3166
	66	2314	2426	2536	2656	2768	2878	2990	3128	3226
	72	2344	2460	2574	2698	2814	2928	3044	3186	3288

Note: Outlined areas above are for Skystar 601A which utilizes the Sonesse 400 Series Motors.
For Contract Pricing, call us at 800.828.2500.

GROUP 4 SHADE PRICING

Pattern Name	Max. Width	Openness Factor	Can be Railroaded	Can be Seamed
VX SCREEN 3101	118"	1%	N/A	N/A

- Prices include the following:
- The **601A (48" x 48") Skystar** shade comes with a Sonesse 400 Series RTS Motor, two 4040 Fascias (one for the top, one for the bottom) and two Side Channels for each side.
 - The **601B (72" x 72") Skystar** shade comes with a Sonesse 500 Series RTS Motor, two 5050 Headboxes (one for the top, one for the bottom) and two Side Channels for each side.

		Width in inches								
		24"	30	36	42	48	54	60	66	72
Height in inches	36"	2172	2262	2354	2454	2546	2640	2732	2852	2936
	42	2200	2296	2394	2498	2594	2692	2788	2912	2998
	48	2230	2332	2432	2542	2642	2742	2844	2972	3062
	54	2262	2366	2472	2584	2690	2794	2900	3032	3126
	60	2292	2402	2510	2628	2736	2846	2956	3092	3188
	66	2322	2436	2550	2670	2784	2898	3012	3152	3252
	72	2354	2470	2588	2714	2832	2950	3068	3212	3314

Note: Outlined areas above are for Skystar 601A which utilizes the Sonesse 400 Series Motors.
For Contract Pricing, call us at 800.828.2500.

GROUP 5 SHADE PRICING

Pattern Name	Max. Width	Openness Factor	Can be Railroaded	Can be Seamed
BASKETWEAVE PLUS 5%	118"	5%	N/A	N/A
HILLCREST	110"	N/A	N/A	N/A
KLEENSCREEN	118"	N/A	N/A	N/A
TWILL 3%	118"	3%	N/A	N/A

Prices include the following:

- The **601A (48" x 48") Skystar** shade comes with a Sonesse 400 Series RTS Motor, two 4040 Fascias (one for the top, one for the bottom) and two Side Channels for each side.
- The **601B (72" x 72") Skystar** shade comes with a Sonesse 500 Series RTS Motor, two 5050 Headboxes (one for the top, one for the bottom) and two Side Channels for each side.

		Width in inches								
		24"	30	36	42	48	54	60	66	72
Height in inches	36"	2170	2258	2350	2450	2540	2632	2724	2842	2934
	42	2196	2292	2388	2492	2588	2684	2780	2902	2998
	48	2226	2326	2426	2534	2634	2734	2834	2960	3060
	54	2258	2360	2464	2576	2680	2784	2888	3020	3124
	60	2288	2396	2504	2620	2728	2836	2944	3078	3188
	66	2318	2430	2542	2662	2774	2886	2998	3138	3250
	72	2348	2464	2580	2704	2820	2938	3054	3196	3314

Note: Outlined areas above are for Skystar 601A which utilizes the Sonesse 400 Series Motors.
For Contract Pricing, call us at 800.828.2500.

GROUP 6 SHADE PRICING

Pattern Name	Max. Width	Openness Factor	Can be Railroaded	Can be Seamed	Pattern Name	Max. Width	Openness Factor	Can be Railroaded	Can be Seamed
BASKETWEAVE PLUS 3%	118"	3%	N/A	N/A	SUNTEX 95	126"	5%	N/A	N/A
LUCCA	118"	N/A	N/A	N/A	SUNTEX 95 MATTE	126"	5%	N/A	N/A
MERIDIAN	118"	N/A	N/A	N/A	TWILL 1%	118"	1%	N/A	N/A
NANO 95	126"	5%	N/A	N/A					
SHEERWEAVE 7450	118"	N/A	N/A	N/A					

Prices include the following:

- The **601A (48" x 48") Skystar** shade comes with a Sonesse 400 Series RTS Motor, two 4040 Fascias (one for the top, one for the bottom) and two Side Channels for each side.
- The **601B (72" x 72") Skystar** shade comes with a Sonesse 500 Series RTS Motor, two 5050 Headboxes (one for the top, one for the bottom) and two Side Channels for each side.

Width in inches									
Height in inches	24"	30	36	42	48	54	60	66	72
	2186	2278	2372	2476	2572	2668	2764	2888	2984
	2214	2314	2414	2522	2624	2724	2824	2952	3054
	2246	2352	2456	2570	2674	2778	2884	3018	3122
	2280	2388	2498	2616	2724	2834	2944	3082	3192
	2312	2426	2540	2662	2776	2890	3004	3146	3262
	2344	2462	2582	2708	2826	2946	3064	3212	3330
72	2376	2500	2622	2754	2878	3000	3124	3276	3400

Note: Outlined areas above are for Skystar 601A which utilizes the Sonesse 400 Series Motors.
For Contract Pricing, call us at 800.828.2500.

GROUP 7 SHADE PRICING

Pattern Name	Max. Width	Openness Factor	Can be Railroaded	Can be Seamed
TRELLIS	82"	N/A	N/A	N/A
TULIP	82"	N/A	N/A	N/A

- Prices include the following:
- The **601A (48" x 48") Skystar** shade comes with a Sonesse 400 Series RTS Motor, two 4040 Fascias (one for the top, one for the bottom) and two Side Channels for each side.
 - The **601B (72" x 72") Skystar** shade comes with a Sonesse 500 Series RTS Motor, two 5050 Headboxes (one for the top, one for the bottom) and two Side Channels for each side.

		Width in inches								
		24"	30	36	42	48	54	60	66	72
Height in inches	36"	2188	2282	2378	2484	2580	2676	2764	2874	2954
	42	2218	2320	2422	2530	2632	2732	2824	2936	3020
	48	2252	2358	2464	2578	2684	2790	2884	3000	3086
	54	2284	2396	2506	2624	2736	2846	2944	3062	3152
	60	2318	2432	2548	2672	2788	2904	3006	3126	3216
	66	2350	2470	2590	2720	2840	2960	3066	3188	3282
	72	2384	2508	2634	2766	2892	3016	3126	3250	3348

Note: Outlined areas above are for Skystar 601A which utilizes the Sonesse 400 Series Motors.
For Contract Pricing, call us at 800.828.2500.

GROUP 8 SHADE PRICING

Pattern Name	Max. Width	Openness Factor	Can be Railroaded	Can be Seamed
ICE	114"	N/A	N/A	N/A
SOLIDITY	110"	N/A	N/A	N/A
SPRING	114"	N/A	N/A	N/A
ZORA TWLIGIHT	126"	N/A	N/A	N/A

- Prices include the following:
- The **601A (48" x 48") Skystar** shade comes with a Sonesse 400 Series RTS Motor, two 4040 Fascias (one for the top, one for the bottom) and two Side Channels for each side.
 - The **601B (72" x 72") Skystar** shade comes with a Sonesse 500 Series RTS Motor, two 5050 Headboxes (one for the top, one for the bottom) and two Side Channels for each side.

		Width in inches								
		24"	30	36	42	48	54	60	66	72
Height in inches	36"	2194	2288	2386	2492	2590	2688	2784	2912	3010
	42	2224	2326	2430	2540	2642	2746	2848	2980	3084
	48	2258	2366	2472	2588	2696	2804	2912	3048	3158
	54	2292	2404	2516	2636	2750	2862	2974	3116	3230
	60	2324	2442	2560	2686	2802	2920	3038	3186	3304
	66	2358	2480	2604	2734	2856	2978	3100	3254	3376
	72	2392	2520	2646	2782	2910	3036	3164	3322	3450

Note: Outlined areas above are for Skystar 601A which utilizes the Sonesse 400 Series Motors.
For Contract Pricing, call us at 800.828.2500.

GROUP 9 SHADE PRICING

Pattern Name	Max. Width	Openness Factor	Can be Railroaded	Can be Seamed
ELEMENTAL	94"	N/A	N/A	N/A
E-SCREEN 5%	122"	5%	N/A	N/A
E-SCREEN 10%	122"	10%	N/A	N/A
SHEERWEAVE 2360	126"	10%	N/A	N/A

- Prices include the following:
- The **601A (48" x 48") Skystar** shade comes with a Sonesse 400 Series RTS Motor, two 4040 Fascias (one for the top, one for the bottom) and two Side Channels for each side.
 - The **601B (72" x 72") Skystar** shade comes with a Sonesse 500 Series RTS Motor, two 5050 Headboxes (one for the top, one for the bottom) and two Side Channels for each side.

		Width in inches								
		24"	30	36	42	48	54	60	66	72
Height in inches	36"	2196	2292	2390	2496	2596	2694	2792	2922	3008
	42	2228	2332	2434	2546	2650	2754	2856	2990	3080
	48	2262	2370	2478	2596	2704	2812	2920	3060	3152
	54	2296	2410	2522	2644	2758	2872	2984	3128	3224
	60	2330	2448	2566	2694	2812	2930	3050	3198	3298
	66	2364	2488	2610	2742	2866	2990	3114	3268	3370
	72	2398	2526	2654	2792	2920	3048	3178	3336	3442

Note: Outlined areas above are for Skystar 601A which utilizes the Sonesse 400 Series Motors.
For Contract Pricing, call us at 800.828.2500.

GROUP 10 SHADE PRICING

Pattern Name	Max. Width	Openness Factor	Can be Railroaded	Can be Seamed	Pattern Name	Max. Width	Openness Factor	Can be Railroaded	Can be Seamed
E-SCREEN 3%	122"	3%	N/A	N/A	SHEERWEAVE 5000**	98"	Varies	N/A	N/A
M-SCREEN 3%	122"	3%	N/A	N/A					
SHEERWEAVE 2390	126"	5%	N/A	N/A					
SHEERWEAVE 2410	126"	3%	N/A	N/A					
SHEERWEAVE 4400**	126"	3%	N/A	N/A					

Prices include the following:

- The **601A (48" x 48") Skystar** shade comes with a Sonesse 400 Series RTS Motor, two 4040 Fascias (one for the top, one for the bottom) and two Side Channels for each side.
- The **601B (72" x 72") Skystar** shade comes with a Sonesse 500 Series RTS Motor, two 5050 Headboxes (one for the top, one for the bottom) and two Side Channels for each side.

		Width in inches								
		24"	30	36	42	48	54	60	66	72
Height in inches	36"	2202	2298	2398	2506	2606	2706	2806	2936	3022
	42	2234	2338	2444	2556	2662	2766	2872	3008	3096
	48	2268	2378	2488	2606	2716	2826	2938	3078	3172
	54	2302	2418	2534	2656	2772	2888	3004	3150	3246
	60	2338	2458	2578	2708	2828	2948	3070	3220	3320
	66	2372	2498	2624	2758	2884	3010	3134	3292	3394
	72	2406	2538	2668	2808	2938	3070	3200	3362	3470

GROUP 11 SHADE PRICING

Pattern Name	Max. Width	Openness Factor	Can be Railroaded	Can be Seamed	Pattern Name	Max. Width	Openness Factor	Can be Railroaded	Can be Seamed
BALMORAL PRIVACY	118"	N/A	N/A	N/A	SHEERWEAVE 7800	118"	N/A	N/A	N/A
DARWIN BLACKOUT	110"	N/A	N/A	N/A	SHEERWEAVE 7850	118"	N/A	N/A	N/A
E-SCREEN 0.5%	126"	0.5%	N/A	N/A	WAXING	114"	N/A	N/A	N/A
PALM BEACH BLACKOUT	118"	N/A	N/A	N/A					
SHEERWEAVE 7400	118"	N/A	N/A	N/A					

Prices include the following:

- The **601A (48" x 48") Skystar** shade comes with a Sonesse 400 Series RTS Motor, two 4040 Fascias (one for the top, one for the bottom) and two Side Channels for each side.
- The **601B (72" x 72") Skystar** shade comes with a Sonesse 500 Series RTS Motor, two 5050 Headboxes (one for the top, one for the bottom) and two Side Channels for each side.

Width in inches									
Height in inches	24"	30	36	42	48	54	60	66	72
	2208	2306	2408	2518	2618	2720	2822	2954	3056
	2240	2348	2454	2570	2676	2784	2890	3028	3136
	2276	2388	2500	2622	2734	2846	2958	3102	3216
	2312	2430	2548	2674	2790	2908	3026	3176	3294
	2348	2470	2594	2726	2848	2972	3094	3250	3374
	2384	2512	2640	2776	2906	3034	3162	3322	3452
	2418	2552	2686	2828	2962	3096	3230	3396	3532

Note: Outlined areas above are for Skystar 601A which utilizes the Sonesse 400 Series Motors.
For Contract Pricing, call us at 800.828.2500.

GROUP 12 SHADE PRICING

Pattern Name	Max. Width	Openness Factor	Can be Railroaded	Can be Seamed
E-SCREEN 1%	122"	1%	N/A	N/A
SHEERWEAVE 2500	126"	1%	N/A	N/A
SHEERWEAVE 4800	126"	1%	N/A	N/A
S-SCREEN 4%	122"	4%	N/A	N/A

- Prices include the following:
- The **601A (48" x 48") Skystar** shade comes with a Sonesse 400 Series RTS Motor, two 4040 Fascias (one for the top, one for the bottom) and two Side Channels for each side.
 - The **601B (72" x 72") Skystar** shade comes with a Sonesse 500 Series RTS Motor, two 5050 Headboxes (one for the top, one for the bottom) and two Side Channels for each side.

		Width in inches								
		24"	30	36	42	48	54	60	66	72
Height in inches	36"	2210	2308	2410	2520	2622	2722	2824	2958	3044
	42	2242	2350	2456	2572	2678	2786	2894	3032	3122
	48	2278	2390	2504	2624	2736	2848	2962	3106	3200
	54	2314	2432	2550	2676	2794	2912	3030	3180	3278
	60	2350	2472	2596	2728	2852	2976	3098	3254	3354
	66	2386	2514	2644	2780	2910	3038	3168	3328	3432
	72	2420	2556	2690	2832	2966	3102	3236	3402	3510

Note: Outlined areas above are for Skystar 601A which utilizes the Sonesse 400 Series Motors.
For Contract Pricing, call us at 800.828.2500.

GROUP 13 SHADE PRICING

Pattern Name	Max. Width	Openness Factor	Can be Railroaded	Can be Seamed
MIA PRIVACY	94"	N/A	N/A	N/A
NATAL BLACKOUT	98"	N/A	N/A	N/A
SALVADOR SHEER	94"	N/A	N/A	N/A

- Prices include the following:
- The **601A (48" x 48") Skystar** shade comes with a Sonesse 400 Series RTS Motor, two 4040 Fascias (one for the top, one for the bottom) and two Side Channels for each side.
 - The **601B (72" x 72") Skystar** shade comes with a Sonesse 500 Series RTS Motor, two 5050 Headboxes (one for the top, one for the bottom) and two Side Channels for each side.

		Width in inches								
		24"	30	36	42	48	54	60	66	72
Height in inches	36"	2226	2330	2434	2548	2654	2760	2866	3002	3082
	42	2262	2374	2486	2606	2718	2828	2940	3080	3164
	48	2300	2418	2536	2662	2780	2898	3016	3160	3248
	54	2338	2462	2586	2718	2842	2966	3090	3240	3330
	60	2376	2506	2636	2774	2904	3034	3164	3320	3412
	66	2414	2550	2686	2830	2966	3102	3238	3400	3494
	72	2452	2594	2736	2886	3028	3170	3312	3480	3576

Note: Outlined areas above are for Skystar 601A which utilizes the Sonesse 400 Series Motors.
For Contract Pricing, call us at 800.828.2500.

GROUP 14 SHADE PRICING

Pattern Name	Max. Width	Openness Factor	Can be Railroaded	Can be Seamed
BALMORAL BLACKOUT	118"	N/A	N/A	N/A
MIAMI BLACKOUT	110"	N/A	N/A	N/A
NATTÉ	122"	5%	N/A	N/A
SNOW	114"	N/A	N/A	N/A
WINTER	114"	N/A	N/A	N/A

- Prices include the following:
- The **601A (48" x 48") Skystar** shade comes with a Sonesse 400 Series RTS Motor, two 4040 Fascias (one for the top, one for the bottom) and two Side Channels for each side.
 - The **601B (72" x 72") Skystar** shade comes with a Sonesse 500 Series RTS Motor, two 5050 Headboxes (one for the top, one for the bottom) and two Side Channels for each side.

		Width in inches								
		24"	30	36	42	48	54	60	66	72
Height in inches	36"	2226	2328	2434	2548	2652	2758	2864	3004	3110
	42	2260	2372	2484	2604	2714	2826	2938	3084	3196
	48	2298	2416	2534	2660	2776	2894	3012	3164	3282
	54	2336	2460	2584	2714	2838	2962	3086	3244	3368
	60	2374	2504	2634	2770	2900	3030	3160	3324	3454
	66	2412	2548	2684	2826	2962	3098	3234	3404	3540
	72	2450	2592	2734	2882	3024	3166	3308	3484	3626

Note: Outlined areas above are for Skystar 601A which utilizes the Sonesse 400 Series Motors.
For Contract Pricing, call us at 800.828.2500.

GROUP 15 SHADE PRICING

Pattern Name	Max. Width	Openness Factor	Can be Railroaded	Can be Seamed
HAMPTON BLACKOUT	110"	N/A	N/A	N/A
MOMBASSA PRIVACY	118"	N/A	N/A	N/A
PARIS SHEER	118"	N/A	N/A	N/A
SHEERWEAVE 7001	118"	N/A	N/A	N/A
WANING	114"	N/A	N/A	N/A

Prices include the following:

- The **601A (48" x 48") Skystar** shade comes with a Sonesse 400 Series RTS Motor, two 4040 Fascias (one for the top, one for the bottom) and two Side Channels for each side.
- The **601B (72" x 72") Skystar** shade comes with a Sonesse 500 Series RTS Motor, two 5050 Headboxes (one for the top, one for the bottom) and two Side Channels for each side.

Height in inches	Width in inches									
	24"	30	36	42	48	54	60	66	72	
	36"	2244	2352	2462	2580	2690	2800	2910	3056	3168
	42	2282	2398	2516	2640	2756	2874	2990	3144	3262
	48	2322	2446	2568	2700	2824	2948	3072	3230	3356
	54	2362	2492	2622	2760	2890	3022	3152	3318	3450
	60	2402	2540	2676	2822	2958	3094	3232	3404	3542
	66	2442	2586	2730	2882	3024	3168	3312	3492	3636
	72	2484	2634	2784	2942	3092	3242	3392	3578	3730

Note: Outlined areas above are for Skystar 601A which utilizes the Sonesse 400 Series Motors.
For Contract Pricing, call us at 800.828.2500.

GROUP 16 SHADE PRICING

Pattern Name	Max. Width	Openness Factor	Can be Railroaded	Can be Seamed
E-SCREEN KOOLBLACK 5%	122"	5%	N/A	N/A
E-SCREEN KOOLBLACK 10%	122"	10%	N/A	N/A
MIA BLACKOUT	94"	N/A	N/A	N/A
VIZELA	94"	N/A	N/A	N/A

- Prices include the following:
- The **601A (48" x 48") Skystar** shade comes with a Sonesse 400 Series RTS Motor, two 4040 Fascias (one for the top, one for the bottom) and two Side Channels for each side.
 - The **601B (72" x 72") Skystar** shade comes with a Sonesse 500 Series RTS Motor, two 5050 Headboxes (one for the top, one for the bottom) and two Side Channels for each side.

		Width in inches								
		24"	30	36	42	48	54	60	66	72
Height in inches	36"	2250	2360	2472	2592	2702	2814	2926	3076	3166
	42	2288	2408	2526	2654	2772	2890	3010	3166	3258
	48	2330	2456	2582	2714	2840	2966	3092	3254	3352
	54	2372	2504	2636	2776	2910	3042	3174	3344	3444
	60	2412	2552	2692	2838	2978	3118	3256	3434	3538
	66	2454	2600	2746	2900	3046	3194	3340	3522	3632
	72	2496	2648	2802	2962	3116	3268	3422	3612	3724

Note: Outlined areas above are for Skystar 601A which utilizes the Sonesse 400 Series Motors.
For Contract Pricing, call us at 800.828.2500.

GROUP 17 SHADE PRICING

Pattern Name	Max. Width	Openness Factor	Can be Railroaded	Can be Seamed
E-SCREEN KOOLBLACK 1%	122"	1%	N/A	N/A
E-SCREEN KOOLBLACK 3%	122"	3%	N/A	N/A

- Prices include the following:
- The **601A (48" x 48") Skystar** shade comes with a Sonesse 400 Series RTS Motor, two 4040 Fascias (one for the top, one for the bottom) and two Side Channels for each side.
 - The **601B (72" x 72") Skystar** shade comes with a Sonesse 500 Series RTS Motor, two 5050 Headboxes (one for the top, one for the bottom) and two Side Channels for each side.

		Width in inches								
		24"	30	36	42	48	54	60	66	72
Height in inches	36"	2266	2378	2494	2618	2734	2850	2966	3120	3210
	42	2306	2430	2552	2684	2806	2930	3054	3216	3310
	48	2350	2480	2610	2750	2880	3010	3140	3310	3408
	54	2392	2530	2668	2814	2952	3090	3228	3406	3508
	60	2436	2582	2728	2880	3026	3172	3316	3500	3606
	66	2480	2632	2786	2946	3098	3252	3404	3596	3706
	72	2524	2684	2844	3012	3172	3332	3492	3690	3804

Note: Outlined areas above are for Skystar 601A which utilizes the Sonesse 400 Series Motors.
For Contract Pricing, call us at 800.828.2500.

GROUP 18 SHADE PRICING

Pattern Name	Max. Width	Openness Factor	Can be Railroaded	Can be Seamed
E-SCREEN KOOLBLACK 0.5%	122"	0.5%	N/A	N/A
MOMBASSA BLACKOUT	118"	N/A	N/A	N/A

- Prices include the following:
- The **601A (48" x 48") Skystar** shade comes with a Sonesse 400 Series RTS Motor, two 4040 Fascias (one for the top, one for the bottom) and two Side Channels for each side.
 - The **601B (72" x 72") Skystar** shade comes with a Sonesse 500 Series RTS Motor, two 5050 Headboxes (one for the top, one for the bottom) and two Side Channels for each side.

		Width in inches								
		24"	30	36	42	48	54	60	66	72
Height in inches	36"	2288	2404	2526	2656	2776	2898	3018	3180	3304
	42	2330	2460	2588	2726	2854	2984	3114	3284	3414
	48	2376	2514	2652	2796	2934	3070	3208	3388	3526
	54	2422	2568	2714	2866	3012	3158	3304	3490	3638
	60	2470	2622	2776	2938	3092	3244	3398	3594	3748
	66	2516	2678	2838	3008	3170	3332	3494	3696	3860
	72	2562	2732	2902	3078	3248	3418	3588	3800	3970

Note: Outlined areas above are for Skystar 601A which utilizes the Sonesse 400 Series Motors.
For Contract Pricing, call us at 800.828.2500.

GROUP 19 SHADE PRICING

Pattern Name	Max. Width	Openness Factor	Can be Railroaded	Can be Seamed
FLOCKÉ	94"	N/A	N/A	N/A

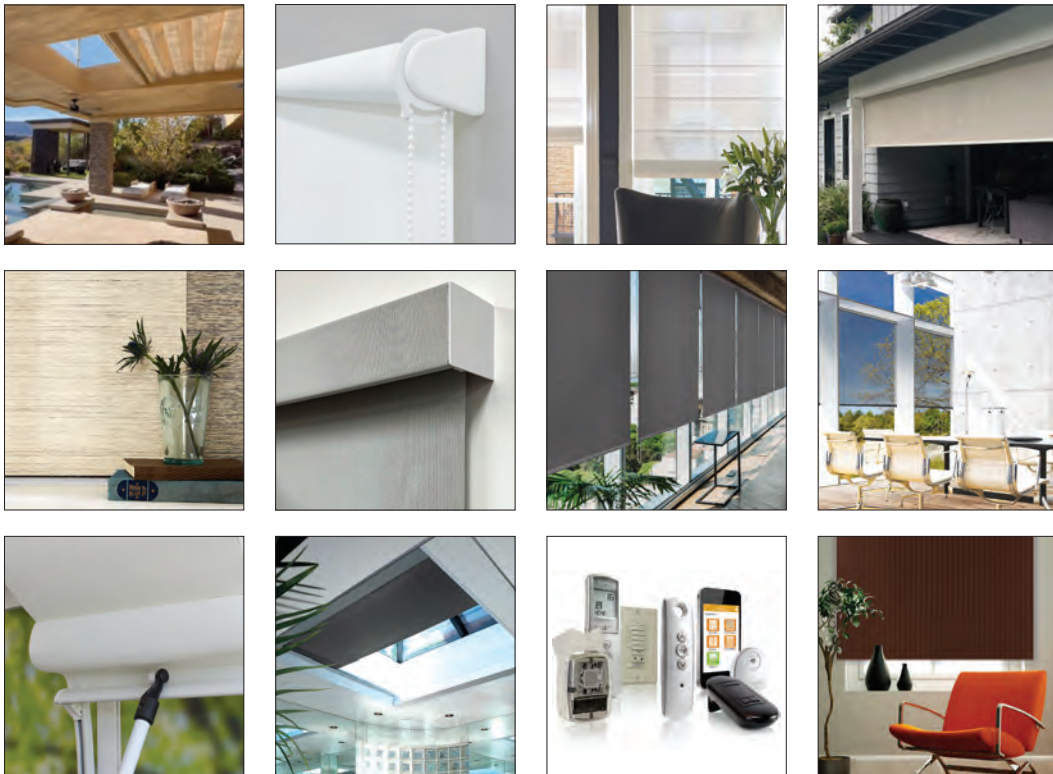
- Prices include the following:
- The **601A (48" x 48") Skystar** shade comes with a Sonesse 400 Series RTS Motor, two 4040 Fascias (one for the top, one for the bottom) and two Side Channels for each side.
 - The **601B (72" x 72") Skystar** shade comes with a Sonesse 500 Series RTS Motor, two 5050 Headboxes (one for the top, one for the bottom) and two Side Channels for each side.

		Width in inches								
		24"	30	36	42	48	54	60	66	72
Height in inches	36"	2328	2456	2588	2726	2858	2988	3120	3288	3368
	42	2376	2518	2658	2806	2948	3088	3228	3404	3488
	48	2428	2578	2728	2888	3038	3188	3338	3522	3608
	54	2480	2640	2800	2968	3128	3286	3446	3638	3728
	60	2532	2702	2870	3048	3218	3386	3556	3756	3848
	66	2584	2762	2942	3128	3306	3486	3664	3872	3968
	72	2636	2824	3012	3208	3396	3584	3774	3990	4088

Note: Outlined areas above are for Skystar 601A which utilizes the Sonesse 400 Series Motors.
For Contract Pricing, call us at 800.828.2500.

Solar Solutions™

When the sun is a problem... **solar solutions** is the answer



Photos courtesy of Louvolite :: Mermet, USA :: Perfect Shade Corp :: Phifer, Inc :: Vertilux

stay inspired online...
www.fabritecdesigns.com

