

Skystar™

[Roll Shades for Horizontal Skylight Windows]

RETAIL PRICE LIST

September 2023



Solar Solutions™

When the sun is a problem... **solar solutions** is the answer

Table of Contents

[Roll Shades for Horizontal Skylight Windows]

Fabric Groups & Page References	2
General Information & Options Pricing.....	4 through 7
Warranty.....	8
Skystar Pricing Charts.....	9 through 29

Pattern Name	Price Group	Page No.	Max. Width	Openness Factor	Fabric Type	Exterior Warranty	Deck No.
AVILA TWILIGHT	16	25	118"	N/A	Blackout	N/A	22
AVILA TWILIGHT FR	18	27	118"	N/A	Blackout	N/A	22
BALMORAL BLACKOUT	15	24	118"	N/A	Blackout	N/A	25 & 26
BALMORAL PRIVACY	13	22	118"	N/A	Decorative	N/A	25 & 26
BASIC BLACKOUT	1	10	72"	N/A	Blackout	N/A	11
BASKETWEAVE PLUS 3%	6	15	118"	3%	Solar	N/A	6
BASKETWEAVE PLUS 5%	6	15	118"	5%	Solar	N/A	7
BELLE	15	24	118"	N/A	Decorative	N/A	34
C.O.M./SPECIAL ORDER	0	9	N/A	N/A	N/A	N/A	N/A
CRUSH	20	29	80"	N/A	Decorative	N/A	27
DAYBREAK	15	24	110"	N/A	Decorative	N/A	34
E-SCREEN 1%	12	21	122"	1%	Solar	5 years	14
E-SCREEN 3%	10	19	122"	3%	Solar	5 years	15
E-SCREEN 5%	10	19	122"	5%	Solar	5 years	16
E-SCREEN 10%	9	18	122"	10%	Solar	5 years	17
ELEMENTAL	7	16	94"	N/A	Decorative	N/A	33
FLOCKÉ	19	28	94"	N/A	Blackout	N/A	31
FUN FIBER	2	11	72"	N/A	Decorative	N/A	34
HAMPTON	15	24	110"	N/A	Decorative	N/A	24
HIGHLAND	11	20	78"	N/A	Decorative	N/A	32 & 33
INFUSION	14	23	78"	N/A	Decorative	N/A	33
M-SCREEN 3%	10	19	122"	3%	Solar	5 years	18
MAYA	3	12	110"	N/A	Blackout	N/A	12
NANO 95	6	15	126"	5%	Solar Exterior	15 years	contact us for details
NATTÉ	16	25	122"	5%	Solar Exterior	10 years	contact us for details
NEW PRIVACY	1	10	92"	N/A	Decorative	N/A	9

Table of Contents

[Roll Shades for Horizontal Skylight Windows]

Pattern Name	Price Group	Page No.	Max. Width	Openness Factor	Fabric Type	Exterior Warranty	Deck No.
S-SCREEN 4%	12	21	122"	4%	Solar	5 years	13
SHEERWEAVE 2000	10	19	126"	5%	Solar	5 years	21
SHEERWEAVE 2360	9	18	126"	10%	Solar	5 years	5
SHEERWEAVE 2390	10	19	126"	5%	Solar	5 years	4
SHEERWEAVE 2410	12	21	126"	3%	Solar	5 years	3
SHEERWEAVE 2500	12	21	126"	1%	Solar	5 years	2
SHEERWEAVE 2703	12	21	126"	3%	Solar	5 years	1
SHEERWEAVE 4400	12	21	126"	3%	Solar	5 years	20
SHEERWEAVE 4800	12	21	126"	1%	Solar	5 years	19
SHEERWEAVE 5000	12	21	98"	Varies	Solar	5 years	24 & 32
SHEERWEAVE 7000	17	26	118"	N/A	Blackout	N/A	23
SHEERWEAVE 7400	13	22	118"	N/A	Blackout	N/A	29
SHEERWEAVE 7450	6	15	118"	N/A	Decorative	N/A	29
SHEERWEAVE 7800	13	22	118"	N/A	Blackout	N/A	28
SHEERWEAVE 7850	13	22	118"	N/A	Decorative	N/A	28
SOLIDITY	8	17	110"	N/A	Blackout	N/A	10
SOLTIS PERFORM 92	15	24	105"	4%	Solar Exterior	5 years	contact us for details
SUNSET	18	27	110"	N/A	Blackout	N/A	34
SUNTEX 95	6	15	126"	5%	Solar Exterior	10 years	contact us for details
TWILL	6	15	118"	1%	Solar	N/A	8
VERONA DAYLIGHT	8	17	118"	N/A	Decorative	N/A	30
VERONA TWILIGHT	13	22	118"	N/A	Blackout	N/A	30
VIZELA	17	26	94"	N/A	Decorative	N/A	31
VX SCREEN 3000 1%	5	14	118"	1%	Solar	N/A	contact us for details
VX SCREEN 3000 3%	4	13	118"	3%	Solar	N/A	8V*
VX SCREEN 3000 5%	4	13	118"	5%	Solar	N/A	contact us for details
WANING	18	27	110"	N/A	Blackout	N/A	34
WAXING	15	24	110"	N/A	Decorative	N/A	34
WICKER	7	16	94"	N/A	Decorative	N/A	33
YAMOTO	14	23	78"	N/A	Decorative	N/A	33

*Note: **Deck 8V** (VX Screen 3000 3%) can be found in our Sample Book after Deck 23, middle column.

GENERAL PRICING INFORMATION

The **SKYSTAR standard price charts** on the following pages **include all installation hardware**. The **601A** (48" x 48") **shade** comes with a Sonesse 400 Series RTS Motor, two 4040 Fascias, 4"H x 4"D (one for the top, one for the bottom) and two Side Channels for each side. The **601B** (72" x 72") **shade** comes with a Sonesse 500 Series RTS Motor, two 5050 Headboxes, 5"H x 4¾"D (one for the top, one for the bottom) and two Side Channels for each side. An Ultra-Quiet version can be specified for either motor type. The 500 Series Motor can also be specified in a network version for home automation. Both of these optional upgrades are priced on the following pages.

FASCIA

Standard Colors: Anodized Clear, Anodized Black, and White.

Custom Colors: Call for pricing.

PRICING



4040 COVERED FASCIA

4040 Fascia (4"H x 4"D)

- Provided with the 601A Skystar Shade.

HEADBOX

Standard Colors: Anodized Clear, Anodized Black, and White.

Custom Colors: Call for pricing.

PRICING



5050 HEADBOX

5050 Headbox (5"H x 4¾"D)

- Provided with the 601B Skystar Shade.

LIGHT CONTROL CHANNELS

Standard Colors: Anodized Clear, Anodized Black, and White.

Custom Colors: Call for pricing.

PRICING



SIDE CHANNEL

2½" Side Channel (for blackout systems)

- No Charge (included with shade).

Side Channel Brushes (for better light control)

- No charge (included with shade).

DETAILS

- Designer look.
- Shadow line reveal across face.
- Matching shadow line across end caps.
- Covered top prevents dust line.
- Built-in bracket channel for easy shade install.
- Shades up to 48" wide by 48" long.

- Covers shade completely.
- Top prevents dust line.
- Shades up to 72" wide by 72" long.

- The side channels prevent light from coming around the side of the shades.
- Creates a full blackout room with no light leakage.
- Return cables are hidden inside the channels.
- The roll shade fabric rides on the channel brushes. This prevents the fabric from rubbing on the aluminum channels, thus protecting the fabric from wear and tear.

MOTORIZATION

NO NEED TO WORRY!

We will help you choose from a wide selection of motorization and control options.

24V DC QUIET MOTORS are low voltage motors that come with a transformer and are plugged into an outlet or hardwired directly into a low voltage panel. These motors are available with a variety of control options including Remote Controls, Wall Switches, RS485 Network/Home Automation, Smart Phones or Tablet Apps. They have have a lifting capacity of 17 to 35 lbs and are capable of operating medium to very large shades. Interior applications only.

120V HARDWIRED QUIET & ULTRA QUIET MOTORS can be plugged into an outlet or hardwired directly into the home/building's electrical system. These motor systems are most widely used because of their versatility. They can be operated by a variety of control options including Remote Controls, Wall Switches, RS 232/485 Network/Home Automation, Smart Phones or Tablet Apps. These are very powerful motors that can lift any size shade. Interior and Exterior applications.

HOME AUTOMATION MOTORIZATION: Our motors (or any motor you specify) can be controlled by any Home Automation System by using an appropriate Interface. For help with Home Automation or any motorization questions, contact our experienced Technical Support Department at 800.828.2500.

All shade motors and controls are completely assembled and pre-programmed at our factory.

MOTOR PRICING

MOTORIZED LIFTING SYSTEMS

For your convenience and to be certain you have included everything required for a motorized installation in your pricing to your customer, we have bundled the price of the motor along with all of the other parts and pieces that are necessary into an all-inclusive MOTOR ASSEMBLY price for each type of motor.

Sonesse 400 Series - Heavy Duty Motors **(for SKYSTAR 601A)**

- 120V AC Motors.
- Includes 10 ft. integrated pigtail cord.
- Can be hardwired or plugged in.
- Available as RTS (Remote) motors.
The Remote Control Motors are included in the price of the Skystar 601A shade and must be specified at the time of the order.
- Remote Control Motors requires a Remote Controller of your choice. Add the cost of the controller to the shade.

– Sonesse 404 Motor

- 120V AC, 4 Nm Motor.
- Minimum shade size is 25" wide.
- Lifts up to 34 lbs.
- Speed RPM 36.
- Sound level ≤ 45 dBA

– Sonesse 406 Motor

- 120V AC, 6 Nm Motor.
- Minimum shade size is 26¼" wide.
- Lifts up to 52 lbs.
- Speed RPM 24.
- Sound level ≤ 45 dBA

Sonesse 500 Series - Heavy Duty Motors **(for SKYSTAR 601B)**

- 120V AC Motors.
- Includes 6½ ft. pigtail cord.
- Can be hardwired or plugged in.
- Available as RTS (Remote) and Network motors.
The Remote Control Motors are included in the price of the Skystar 601B shade and must be specified at the time of the order.
- Remote Control Motors requires a Remote Controller of your choice. Add the cost of the controller to the shade.
- \$210.00 surcharge for a Network Motor.

– Sonesse 506 Motor

- 120V AC, 6 Nm Motor.
- Minimum shade size is 32¾" wide.
- Lifts up to 52 lbs.
- Speed RPM 32.
- Sound level ≤ 45 dBA

Sonesse 500 Series - Heavy Duty Motors **(for SKYSTAR 601B - continued)**

– Sonesse 510 Motor

- 120V AC, 10 Nm Motor.
- Minimum shade size is 32¾" wide.
- Lifts up to 87 lbs.
- Speed RPM 32.
- Sound level ≤ 47 dBA

Note: Most motorized shade assemblies require about 3½" of depth for installation.

Sonesse 500 Series (Ultra Quiet) Motors - AC **(for SKYSTAR 601B)**

- 120V AC Motors.
- Includes 9½ ft. pigtail cord.
- Can be hardwired or plugged in.
- Available as RTS (Remote) and Network motors.
- Remote Control Motors requires a Remote Controller of your choice. Add the cost of the controller to the shade.
- \$210.00 surcharge for a Network Motor.
- \$210.00 *for a Ultra Quiet Motor.*
(RTS min. shade size is 39"; RS485 min. shade size is 40½")

– Sonesse 506 (Ultra Quiet) Motor

- 120V AC, 6 Nm Motor.
- Minimum shade size is 39" wide.
- Lifts up to 52 lbs.
- Speed RPM 24.
- Sound level ≤ 38 dBA

SOMFY REMOTE CONTROLLERS

- **Single-Channel Remote Controller (handheld):** \$144.00 each.
- **Single-Channel Remote Controller (wall mount):** \$334.00 each.
Can operate a single shade or a single group of shades.
- **Five-Channel Remote Controller (handheld):** \$186.00 each.
- **Five-Channel Remote Controller (wall mount):** \$350.00 each.
Can operate 5 individual shades, or 5 groups of shades, and can also operate all shades in a group, or all groups.
- Single-Channel and Five-Channel Remote Controllers are available in white or black.
- **Sixteen-Channel Remote Controller (handheld):** \$594.00 each.
Can operate 16 individual shades, or 16 groups of shades, and can also operate all shades in a group, or all groups.

Sixteen-Channel Remote Controllers are available in white or silver.

NOTE: These controllers are radio signal devices, which means they do not have to be aimed at a receiver. They will work as long as they are within range of the motor assembly, i.e. within 65 feet, which covers most houses.

MOTOR PRICING

SOMFY NETWORK CONTROLS

- **SDN Intelligent Switch:** A programmable switch for network motors that allows you to set scenes.
 - **A Six-Scene option:** \$320.00
 - **A Eight-Scene option:** \$360.00
 Programmable switch available in white or black.
- **RTS to SDN Interface:** \$236.00
A device that will allow one to control a network motor with a RTS remote controller or RTS wall mount switch.

SOMFY NETWORK ACCESSORIES

- **Sixteen-Channel Universal RTS Interface:** \$1,062.00 each.
The interface is used to communicate between home automation system and motor/controls. It is capable of individual or group control. Up to 16 channels are available.

Converts IR, RS232, RS485 to RTS to control Somfy RF motors.
- **RTS Repeater:** \$482.00 each.
The Repeater extends the range of all Somfy RTS controllers. Normal signal range is approximately 60 feet. RTS repeater extends range an additional 70 feet.

Simply plugs into any standard 110V AC electrical outlet. Should be placed at least halfway between sending device (remote control/wall switch/RTS interface) and the motor.

Features an LED light that confirms the unit is receiving the signal. No programming needed.

If you need:

- Contract Pricing.
- Lutron Motors.
- Retrofit Lutron or Customer's Own Motors.
- 4-Wire Standard Motor available as Special Order.
 - To integrate a shade into an electronic Home Automation System.
 - Our In-House Automation Specialist.

Call us at 800.828.2500.

SOMFY'S ADDITIONAL MOTORIZATION OPTIONS

- **TaHoma® RTS/Zigbee Interface:** \$636.00 each.
A smart home experience. Allows you to operate your motorized shades with your favorite mobile device/or tablet interface, whether you are at home or not, or integrate with third-party systems. TaHoma works with Google Assistant and Amazon Alexa, allowing for natural voice commands to control shades.
- **Timers:**
 - **Chronis RTS:** \$472.00 each.
Allows you to operate your motorized shades at any specific time of the day.
 - **Sunis RTS (Sun Sensor):** \$516.00 each.
Allows your motorized shades to automatically rise and lower as the sun moves across the sky.

Plug-in Cords

Plug-in cords eliminate the need for an electrician when using remote control motors.

CORDS (with molded 90° NEMA plug)				
Length of cord	3 feet	6 feet	12 feet	24 feet
Price	\$70	\$80	\$94	\$148

After Market Plug (attached to pigtail): \$35.00 each.

Motor Tester

Used to test a motorized system without the aid of an electrician. Highly recommended for every installer.

- \$210.00 each.

NOTE

Rush Orders

Rush orders will incur **a surcharge of 25%.**

SKYSTAR™

LIMITED LIFETIME WARRANTY

Fabritec's SKYSTAR™ roll shades are guaranteed to be free of fabrication and material defects for the life of the product provided the product is properly installed and is owned by the original purchaser at the time of the claim. This warranty is limited to rework or replacement only and Fabritec retains the right to determine how a fabrication defect will be corrected. Replacements will be made to the original specifications only.

This warranty does not cover conditions or damage resulting from the following:

- Misuse or abuse of the product
- Any damage resulting from improper installation
- Weather damage
- Normal wear and tear

This warranty does not cover collateral costs such as installation and shipping. If you should have a problem with a product, contact your Sales Services Representative with a description of the problem and a request for a Return Authorization. No merchandise return will be accepted without a Return Authorization.

FABRITEC Motor Warranty

Fabritec guarantees the performance of all of its motors for a period of five years. This warranty does not apply in cases of abuse, either intentional or unintentional, including failure to wire a motor to factory specifications. Any claim must be made by the original purchaser.



fabritec, llc. | 7531 Coldwater Canyon Ave | North Hollywood | CA, 91605 | 818 503 8300 (tel) | 818 503 8360 (fax)

C.O.M./SPECIAL ORDER SHADE PRICING

Pattern Name	Max. Width	Openness Factor	Can be Railroaded	Can be Seamed
C.O.M./SPECIAL ORDER	–	–	–	–

- Prices include the following:
- The **601A (48" x 48") Skystar** shade comes with a Sonesse 400 Series RTS Motor, two 4040 Fascias (one for the top, one for the bottom) and two Side Channels for each side.
 - The **601B (72" x 72") Skystar** shade comes with a Sonesse 500 Series RTS Motor, two 5050 Headboxes (one for the top, one for the bottom) and two Side Channels for each side.

		Width in inches								
		24"	30	36	42	48	54	60	66	72
Height in inches	36"	2146	2230	2318	2416	2504	2592	2680	2790	2870
	42	2170	2262	2354	2454	2546	2638	2730	2844	2926
	48	2196	2292	2388	2492	2588	2684	2780	2896	2982
	54	2224	2324	2424	2530	2630	2730	2830	2950	3038
	60	2252	2354	2458	2570	2674	2776	2880	3004	3094
	66	2278	2386	2492	2608	2716	2822	2930	3056	3150
	72	2306	2416	2528	2646	2758	2868	2980	3110	3206

Note: Outlined areas above are for Skystar 601A which utilizes the Sonesse 400 Series Motors.
For Contract Pricing, call us at 800.828.2500.

GROUP 1 SHADE PRICING

Pattern Name	Max. Width	Openness Factor	Can be Railroaded	Can be Seamed
BASIC BLACKOUT	72"	N/A	N/A	N/A
NEW PRIVACY	92"	N/A	N/A	N/A

- Prices include the following:
- The **601A (48" x 48") Skystar** shade comes with a Sonesse 400 Series RTS Motor, two 4040 Fascias (one for the top, one for the bottom) and two Side Channels for each side.
 - The **601B (72" x 72") Skystar** shade comes with a Sonesse 500 Series RTS Motor, two 5050 Headboxes (one for the top, one for the bottom) and two Side Channels for each side.

		Width in inches								
		24"	30	36	42	48	54	60	66	72
Height in inches	36"	2146	2230	2318	2416	2504	2592	2680	2790	2870
	42	2170	2262	2354	2454	2546	2638	2730	2844	2926
	48	2196	2292	2388	2492	2588	2684	2780	2896	2982
	54	2224	2324	2424	2530	2630	2730	2830	2950	3038
	60	2252	2354	2458	2570	2674	2776	2880	3004	3094
	66	2278	2386	2492	2608	2716	2822	2930	3056	3150
	72	2306	2416	2528	2646	2758	2868	2980	3110	3206

Note: Outlined areas above are for Skystar 601A which utilizes the Sonesse 400 Series Motors.
For Contract Pricing, call us at 800.828.2500.

GROUP 2 SHADE PRICING

Pattern Name	Max. Width	Openness Factor	Can be Railroaded	Can be Seamed
FUN FIBER	72"	N/A	N/A	N/A

- Prices include the following:
- The **601A (48" x 48") Skystar** shade comes with a Sonesse 400 Series RTS Motor, two 4040 Fascias (one for the top, one for the bottom) and two Side Channels for each side.
 - The **601B (72" x 72") Skystar** shade comes with a Sonesse 500 Series RTS Motor, two 5050 Headboxes (one for the top, one for the bottom) and two Side Channels for each side.

		Width in inches								
		24"	30	36	42	48	54	60	66	72
Height in inches	36"	2164	2254	2348	2450	2542	2626	2706	2812	2892
	42	2192	2290	2388	2492	2590	2678	2760	2870	2952
	48	2222	2324	2426	2536	2638	2728	2814	2926	3010
	54	2252	2358	2464	2580	2686	2778	2868	2982	3070
	60	2282	2392	2504	2622	2734	2830	2920	3038	3128
	66	2312	2426	2542	2666	2782	2880	2974	3094	3188
	72	2342	2462	2580	2708	2828	2932	3028	3150	3246

Note: Outlined areas above are for Skystar 601A which utilizes the Sonesse 400 Series Motors.
For Contract Pricing, call us at 800.828.2500.

GROUP 3 SHADE PRICING

Pattern Name	Max. Width	Openness Factor	Can be Railroaded	Can be Seamed
MAYA	110"	N/A	N/A	N/A

- Prices include the following:
- The **601A (48" x 48") Skystar** shade comes with a Sonesse 400 Series RTS Motor, two 4040 Fascias (one for the top, one for the bottom) and two Side Channels for each side.
 - The **601B (72" x 72") Skystar** shade comes with a Sonesse 500 Series RTS Motor, two 5050 Headboxes (one for the top, one for the bottom) and two Side Channels for each side.

		Width in inches								
		24"	30	36	42	48	54	60	66	72
Height in inches	36"	2160	2248	2340	2440	2532	2624	2716	2834	2926
	42	2186	2282	2378	2482	2578	2674	2770	2894	2990
	48	2214	2314	2416	2524	2624	2724	2824	2952	3054
	54	2244	2348	2452	2566	2670	2774	2880	3012	3116
	60	2272	2382	2490	2608	2716	2826	2934	3070	3180
	66	2302	2416	2528	2650	2762	2876	2990	3130	3244
	72	2332	2448	2566	2692	2808	2926	3044	3188	3306

Note: Outlined areas above are for Skystar 601A which utilizes the Sonesse 400 Series Motors.
For Contract Pricing, call us at 800.828.2500.

GROUP 4 SHADE PRICING

Pattern Name	Max. Width	Openness Factor	Can be Railroaded	Can be Seamed
VX SCREEN 3000	118"	3%	N/A	N/A
VX SCREEN 3000	118"	5%	N/A	N/A

Prices include the following:

- The **601A (48" x 48") Skystar** shade comes with a Sonesse 400 Series RTS Motor, two 4040 Fascias (one for the top, one for the bottom) and two Side Channels for each side.
- The **601B (72" x 72") Skystar** shade comes with a Sonesse 500 Series RTS Motor, two 5050 Headboxes (one for the top, one for the bottom) and two Side Channels for each side.

		Width in inches								
		24"	30	36	42	48	54	60	66	72
Height in inches	36"	2150	2236	2326	2424	2512	2602	2692	2808	2890
	42	2174	2268	2362	2464	2556	2650	2744	2862	2948
	48	2202	2300	2398	2502	2600	2698	2794	2918	3008
	54	2230	2332	2434	2542	2644	2746	2846	2974	3066
	60	2258	2364	2468	2582	2688	2792	2898	3030	3124
	66	2286	2396	2504	2622	2732	2840	2950	3086	3182
	72	2314	2428	2540	2662	2774	2888	3002	3140	3242

Note: Outlined areas above are for Skystar 601A which utilizes the Sonesse 400 Series Motors.
For Contract Pricing, call us at 800.828.2500.

GROUP 5 SHADE PRICING

Pattern Name	Max. Width	Openness Factor	Can be Railroaded	Can be Seamed
VX SCREEN 3000	118"	1%	N/A	N/A

- Prices include the following:
- The **601A (48" x 48") Skystar** shade comes with a Sonesse 400 Series RTS Motor, two 4040 Fascias (one for the top, one for the bottom) and two Side Channels for each side.
 - The **601B (72" x 72") Skystar** shade comes with a Sonesse 500 Series RTS Motor, two 5050 Headboxes (one for the top, one for the bottom) and two Side Channels for each side.

		Width in inches								
		24"	30	36	42	48	54	60	66	72
Height in inches	36"	2154	2242	2334	2432	2522	2614	2704	2822	2904
	42	2180	2276	2370	2472	2568	2662	2758	2878	2964
	48	2208	2308	2406	2514	2612	2712	2810	2936	3026
	54	2238	2340	2444	2554	2658	2760	2864	2994	3086
	60	2266	2374	2480	2596	2702	2810	2916	3050	3146
	66	2294	2406	2516	2636	2748	2858	2970	3108	3206
	72	2322	2438	2554	2678	2792	2908	3024	3166	3266

Note: Outlined areas above are for Skystar 601A which utilizes the Sonesse 400 Series Motors.
For Contract Pricing, call us at 800.828.2500.

GROUP 6 SHADE PRICING

Pattern Name	Max. Width	Openness Factor	Can be Railroaded	Can be Seamed
BASKETWEAVE PLUS 3%	118"	3%	N/A	N/A
BASKETWEAVE PLUS 5%	118"	5%	N/A	N/A
SHEERWEAVE 7450	118"	N/A	N/A	N/A
NANO 95	126"	5%	N/A	N/A

Prices include the following:

- The **601A (48" x 48") Skystar** shade comes with a Sonesse 400 Series RTS Motor, two 4040 Fascias (one for the top, one for the bottom) and two Side Channels for each side.
- The **601B (72" x 72") Skystar** shade comes with a Sonesse 500 Series RTS Motor, two 5050 Headboxes (one for the top, one for the bottom) and two Side Channels for each side.

Height in inches	Width in inches									
	24"	30	36	42	48	54	60	66	72	
	36"	2168	2260	2354	2456	2550	2644	2740	2862	2956
	42	2196	2296	2394	2500	2600	2698	2798	2924	3024
	48	2226	2330	2434	2544	2648	2752	2856	2988	3092
	54	2258	2366	2474	2590	2698	2806	2914	3050	3158
	60	2288	2400	2512	2634	2746	2858	2972	3112	3226
	66	2318	2436	2552	2678	2794	2912	3030	3176	3292
	72	2348	2470	2592	2722	2844	2966	3088	3238	3360

Note: Outlined areas above are for Skystar 601A which utilizes the Sonesse 400 Series Motors.
For Contract Pricing, call us at 800.828.2500.

GROUP 7 SHADE PRICING

Pattern Name	Max. Width	Openness Factor	Can be Railroaded	Can be Seamed
ELEMENTAL	94"	N/A	N/A	N/A
WICKER	94"	N/A	N/A	N/A

- Prices include the following:
- The **601A (48" x 48") Skystar** shade comes with a Sonesse 400 Series RTS Motor, two 4040 Fascias (one for the top, one for the bottom) and two Side Channels for each side.
 - The **601B (72" x 72") Skystar** shade comes with a Sonesse 500 Series RTS Motor, two 5050 Headboxes (one for the top, one for the bottom) and two Side Channels for each side.

		Width in inches								
		24"	30	36	42	48	54	60	66	72
Height in inches	36"	2176	2270	2366	2470	2566	2662	2758	2880	2960
	42	2206	2306	2408	2516	2618	2718	2820	2946	3028
	48	2236	2342	2448	2562	2668	2774	2880	3010	3096
	54	2268	2378	2490	2608	2718	2830	2940	3076	3164
	60	2300	2416	2530	2654	2770	2886	3002	3142	3232
	66	2332	2452	2572	2700	2820	2942	3062	3206	3300
	72	2362	2488	2614	2746	2872	2998	3122	3272	3368

Note: Outlined areas above are for Skystar 601A which utilizes the Sonesse 400 Series Motors.
For Contract Pricing, call us at 800.828.2500.

GROUP 8 SHADE PRICING

Pattern Name	Max. Width	Openness Factor	Can be Railroaded	Can be Seamed
SOLIDITY	110"	N/A	N/A	N/A
VERONA DAYLIGHT	118"	N/A	N/A	N/A

- Prices include the following:
- The **601A (48" x 48") Skystar** shade comes with a Sonesse 400 Series RTS Motor, two 4040 Fascias (one for the top, one for the bottom) and two Side Channels for each side.
 - The **601B (72" x 72") Skystar** shade comes with a Sonesse 500 Series RTS Motor, two 5050 Headboxes (one for the top, one for the bottom) and two Side Channels for each side.

		Width in inches								
		24"	30	36	42	48	54	60	66	72
Height in inches	36"	2176	2268	2364	2468	2564	2660	2754	2880	2976
	42	2204	2304	2404	2514	2614	2714	2816	2946	3046
	48	2234	2340	2446	2560	2664	2770	2876	3010	3116
	54	2266	2376	2486	2604	2716	2826	2936	3076	3186
	60	2298	2412	2528	2650	2766	2880	2996	3140	3256
	66	2328	2448	2568	2696	2816	2936	3056	3206	3326
	72	2360	2484	2610	2742	2866	2992	3116	3270	3396

Note: Outlined areas above are for Skystar 601A which utilizes the Sonesse 400 Series Motors.
For Contract Pricing, call us at 800.828.2500.

GROUP 9 SHADE PRICING

Pattern Name	Max. Width	Openness Factor	Can be Railroaded	Can be Seamed
E-SCREEN 10%	122"	10%	N/A	N/A
SHEERWEAVE 2360	126"	10%	N/A	N/A

- Prices include the following:
- The **601A (48" x 48") Skystar** shade comes with a Sonesse 400 Series RTS Motor, two 4040 Fascias (one for the top, one for the bottom) and two Side Channels for each side.
 - The **601B (72" x 72") Skystar** shade comes with a Sonesse 500 Series RTS Motor, two 5050 Headboxes (one for the top, one for the bottom) and two Side Channels for each side.

		Width in inches								
		24"	30	36	42	48	54	60	66	72
Height in inches	36"	2178	2270	2368	2472	2568	2664	2760	2886	2972
	42	2206	2308	2408	2518	2620	2720	2822	2952	3040
	48	2238	2344	2450	2564	2670	2776	2882	3018	3110
	54	2270	2380	2492	2610	2722	2832	2944	3084	3178
	60	2302	2418	2534	2656	2772	2888	3004	3150	3248
	66	2332	2454	2574	2704	2824	2944	3066	3216	3318
	72	2364	2490	2616	2750	2876	3002	3126	3282	3386

Note: Outlined areas above are for Skystar 601A which utilizes the Sonesse 400 Series Motors.
For Contract Pricing, call us at 800.828.2500.

GROUP 10 SHADE PRICING

Pattern Name	Max. Width	Openness Factor	Can be Railroaded	Can be Seamed
E-SCREEN 3%	122"	3%	N/A	N/A
E-SCREEN 5%	122"	5%	N/A	N/A
M-SCREEN 3%	122"	3%	N/A	N/A
SHEERWEAVE 2000	126"	5%	N/A	N/A
SHEERWEAVE 2390	126"	5%	N/A	N/A

- Prices include the following:
- The **601A (48" x 48") Skystar** shade comes with a Sonesse 400 Series RTS Motor, two 4040 Fascias (one for the top, one for the bottom) and two Side Channels for each side.
 - The **601B (72" x 72") Skystar** shade comes with a Sonesse 500 Series RTS Motor, two 5050 Headboxes (one for the top, one for the bottom) and two Side Channels for each side.

Width in inches									
Height in inches	24"	30	36	42	48	54	60	66	72
	2184	2280	2378	2484	2582	2680	2778	2906	2990
	2214	2316	2420	2532	2634	2738	2840	2974	3062
	2246	2354	2462	2580	2688	2796	2904	3042	3134
	2278	2392	2506	2626	2740	2854	2968	3112	3206
	2312	2430	2548	2674	2794	2912	3030	3180	3278
	2344	2468	2592	2722	2846	2970	3094	3248	3350
72	2376	2506	2634	2770	2900	3028	3158	3316	3422

Note: Outlined areas above are for Skystar 601A which utilizes the Sonesse 400 Series Motors.
For Contract Pricing, call us at 800.828.2500.

GROUP 11 SHADE PRICING

Pattern Name	Max. Width	Openness Factor	Can be Railroaded	Can be Seamed
HIGHLAND	78"	N/A	N/A	N/A

- Prices include the following:
- The **601A (48" x 48") Skystar** shade comes with a Sonesse 400 Series RTS Motor, two 4040 Fascias (one for the top, one for the bottom) and two Side Channels for each side.
 - The **601B (72" x 72") Skystar** shade comes with a Sonesse 500 Series RTS Motor, two 5050 Headboxes (one for the top, one for the bottom) and two Side Channels for each side.

		Width in inches								
		24"	30	36	42	48	54	60	66	72
Height in inches	36"	2194	2292	2392	2502	2602	2702	2782	2892	2972
	42	2226	2332	2438	2552	2658	2764	2846	2958	3042
	48	2260	2370	2482	2602	2714	2824	2910	3026	3110
	54	2294	2410	2528	2652	2770	2886	2974	3092	3180
	60	2328	2450	2572	2702	2826	2946	3038	3158	3250
	66	2362	2490	2618	2754	2882	3008	3102	3226	3318
	72	2396	2528	2662	2804	2938	3070	3166	3292	3388

Note: Outlined areas above are for Skystar 601A which utilizes the Sonesse 400 Series Motors.
For Contract Pricing, call us at 800.828.2500.

GROUP 12 SHADE PRICING

Pattern Name	Max. Width	Openness Factor	Can be Railroaded	Can be Seamed
E-SCREEN 1%	122"	1%	N/A	N/A
S-SCREEN 4%	122"	4%	N/A	N/A
SHEERWEAVE 2410	126"	3%	N/A	N/A
SHEERWEAVE 2500	126"	1%	N/A	N/A
SHEERWEAVE 2703	126"	3%	N/A	N/A

Pattern Name	Max. Width	Openness Factor	Can be Railroaded	Can be Seamed
SHEERWEAVE 4400	126"	3%	N/A	N/A
SHEERWEAVE 4800	126"	1%	N/A	N/A
SHEERWEAVE 5000	98"	Varies	N/A	N/A

Prices include the following:

- The **601A (48" x 48") Skystar** shade comes with a Sonesse 400 Series RTS Motor, two 4040 Fascias (one for the top, one for the bottom) and two Side Channels for each side.
- The **601B (72" x 72") Skystar** shade comes with a Sonesse 500 Series RTS Motor, two 5050 Headboxes (one for the top, one for the bottom) and two Side Channels for each side.

Height in inches	Width in inches									
	24"	30	36	42	48	54	60	66	72	
	36"	2192	2288	2388	2496	2596	2696	2796	2928	3014
	42	2222	2328	2434	2546	2652	2758	2862	3000	3088
	48	2256	2366	2478	2596	2706	2818	2928	3070	3162
	54	2290	2406	2522	2646	2762	2878	2994	3142	3238
	60	2324	2444	2566	2696	2818	2938	3060	3214	3312
	66	2356	2484	2610	2746	2872	3000	3126	3284	3388
	72	2390	2522	2654	2796	2928	3060	3192	3356	3462

Note: Outlined areas above are for Skystar 601A which utilizes the Sonesse 400 Series Motors.
For Contract Pricing, call us at 800.828.2500.

GROUP 13 SHADE PRICING

Pattern Name	Max. Width	Openness Factor	Can be Railroaded	Can be Seamed
BALMORAL PRIVACY	118"	N/A	N/A	N/A
SHEERWEAVE 7400	118"	N/A	N/A	N/A
SHEERWEAVE 7800	118"	N/A	N/A	N/A
SHEERWEAVE 7850	118"	N/A	N/A	N/A
VERONA TWILIGHT	118"	N/A	N/A	N/A

- Prices include the following:
- The **601A (48" x 48") Skystar** shade comes with a Sonesse 400 Series RTS Motor, two 4040 Fascias (one for the top, one for the bottom) and two Side Channels for each side.
 - The **601B (72" x 72") Skystar** shade comes with a Sonesse 500 Series RTS Motor, two 5050 Headboxes (one for the top, one for the bottom) and two Side Channels for each side.

		Width in inches								
		24"	30	36	42	48	54	60	66	72
Height in inches	36"	2190	2288	2388	2496	2596	2696	2794	2926	3026
	42	2222	2326	2432	2546	2650	2756	2860	2998	3104
	48	2256	2366	2476	2594	2706	2816	2926	3068	3180
	54	2288	2404	2520	2644	2760	2876	2992	3140	3256
	60	2322	2444	2564	2694	2816	2936	3058	3210	3332
	66	2356	2482	2608	2744	2870	2996	3124	3282	3408
	72	2390	2522	2652	2792	2924	3056	3188	3352	3484

Note: Outlined areas above are for Skystar 601A which utilizes the Sonesse 400 Series Motors.
For Contract Pricing, call us at 800.828.2500.

GROUP 14 SHADE PRICING

Pattern Name	Max. Width	Openness Factor	Can be Railroaded	Can be Seamed
INFUSION	78"	N/A	N/A	N/A
YAMOTO	78"	N/A	N/A	N/A

- Prices include the following:
- The **601A (48" x 48") Skystar** shade comes with a Sonesse 400 Series RTS Motor, two 4040 Fascias (one for the top, one for the bottom) and two Side Channels for each side.
 - The **601B (72" x 72") Skystar** shade comes with a Sonesse 500 Series RTS Motor, two 5050 Headboxes (one for the top, one for the bottom) and two Side Channels for each side.

		Width in inches								
		24"	30	36	42	48	54	60	66	72
Height in inches	36"	2228	2334	2444	2560	2670	2778	2858	2972	3052
	42	2264	2380	2496	2618	2734	2850	2932	3048	3130
	48	2302	2424	2548	2678	2800	2920	3006	3126	3210
	54	2340	2470	2598	2736	2864	2992	3080	3202	3290
	60	2380	2516	2650	2794	2930	3064	3154	3278	3370
	66	2418	2560	2702	2852	2994	3136	3228	3356	3450
	72	2456	2606	2754	2912	3060	3206	3304	3432	3528

Note: Outlined areas above are for Skystar 601A which utilizes the Sonesse 400 Series Motors.
For Contract Pricing, call us at 800.828.2500.

GROUP 15 SHADE PRICING

Pattern Name	Max. Width	Openness Factor	Can be Railroaded	Can be Seamed	Pattern Name	Max. Width	Openness Factor	Can be Railroaded	Can be Seamed
BALMORAL BLACKOUT	118"	N/A	N/A	N/A	SOLTIS PERFORM 92	105"	4%	N/A	N/A
BELLE	110"	N/A	N/A	N/A	WAXING	110"	N/A	N/A	N/A
DAYBREAK	110"	N/A	N/A	N/A					
HAMPTON	110"	N/A	N/A	N/A					

Prices include the following:

- The **601A (48" x 48") Skystar** shade comes with a Sonesse 400 Series RTS Motor, two 4040 Fascias (one for the top, one for the bottom) and two Side Channels for each side.
- The **601B (72" x 72") Skystar** shade comes with a Sonesse 500 Series RTS Motor, two 5050 Headboxes (one for the top, one for the bottom) and two Side Channels for each side.

		Width in inches								
		24"	30	36	42	48	54	60	66	72
Height in inches	36"	2210	2312	2416	2528	2634	2738	2842	2980	3086
	42	2244	2354	2464	2584	2694	2804	2914	3060	3170
	48	2280	2396	2512	2638	2754	2870	2988	3138	3256
	54	2316	2438	2560	2692	2814	2936	3060	3216	3340
	60	2352	2480	2610	2746	2874	3002	3132	3294	3424
	66	2388	2522	2658	2800	2934	3068	3204	3372	3508
	72	2424	2564	2706	2854	2994	3136	3276	3450	3592

GROUP 16 SHADE PRICING

Pattern Name	Max. Width	Openness Factor	Can be Railroaded	Can be Seamed
AVILA TWILIGHT*	118"	N/A	N/A	N/A
NATTÉ	122"	5%	N/A	N/A

* Note: Skystar shades made with AVILA TWILIGHT FABRICS come with a *sewn hem pocket*.
A fire-retardant version of this fabric is available upon request with an *upcharge* for treating the fabric. See PRICE GROUP 18 for Avila Twilight fire-retardant fabric costs.

Prices include the following:

- The **601A (48" x 48") Skystar** shade comes with a Sonesse 400 Series RTS Motor, two 4040 Fascias (one for the top, one for the bottom) and two Side Channels for each side.
- The **601B (72" x 72") Skystar** shade comes with a Sonesse 500 Series RTS Motor, two 5050 Headboxes (one for the top, one for the bottom) and two Side Channels for each side.

		Width in inches								
		24"	30	36	42	48	54	60	66	72
Height in inches	36"	2206	2306	2410	2522	2626	2728	2832	2968	3074
	42	2238	2348	2458	2574	2684	2794	2902	3046	3156
	48	2274	2390	2504	2628	2744	2858	2974	3122	3238
	54	2310	2430	2552	2680	2802	2924	3044	3198	3320
	60	2346	2472	2600	2734	2862	2988	3116	3276	3404
	66	2380	2514	2646	2788	2920	3052	3186	3352	3486
	72	2416	2554	2694	2840	2978	3118	3256	3428	3568

Note: Outlined areas above are for Skystar 601A which utilizes the Sonesse 400 Series Motors.
For Contract Pricing, call us at 800.828.2500.

GROUP 17 SHADE PRICING

Pattern Name	Max. Width	Openness Factor	Can be Railroaded	Can be Seamed
SHEERWEAVE 7000	118"	N/A	N/A	N/A
VIZELA	94"	N/A	N/A	N/A

- Prices include the following:
- The **601A (48" x 48") Skystar** shade comes with a Sonesse 400 Series RTS Motor, two 4040 Fascias (one for the top, one for the bottom) and two Side Channels for each side.
 - The **601B (72" x 72") Skystar** shade comes with a Sonesse 500 Series RTS Motor, two 5050 Headboxes (one for the top, one for the bottom) and two Side Channels for each side.

		Width in inches								
		24"	30	36	42	48	54	60	66	72
Height in inches	36"	2240	2348	2460	2580	2692	2804	2916	3060	3140
	42	2278	2396	2516	2642	2762	2880	3000	3148	3232
	48	2318	2444	2570	2704	2830	2956	3082	3236	3322
	54	2358	2490	2624	2764	2898	3030	3164	3326	3414
	60	2398	2538	2678	2826	2966	3106	3246	3414	3504
	66	2438	2584	2732	2886	3034	3182	3328	3502	3596
	72	2478	2632	2786	2948	3102	3256	3410	3590	3686

Note: Outlined areas above are for Skystar 601A which utilizes the Sonesse 400 Series Motors.
For Contract Pricing, call us at 800.828.2500.

GROUP 18 SHADE PRICING

Pattern Name	Max. Width	Openness Factor	Can be Railroaded	Can be Seamed	Pattern Name	Max. Width	Openness Factor	Can be Railroaded	Can be Seamed
AVILA TWILIGHT FR*	110"	N/A	N/A	N/A	SUNSET	110"	N/A	N/A	N/A
* FIRE-RETARDANT AVILA TWILIGHT FABRIC (Commercial)					WANING	110"	N/A	N/A	N/A

Prices include the following:

- The **601A (48" x 48") Skystar** shade comes with a Sonesse 400 Series RTS Motor, two 4040 Fascias (one for the top, one for the bottom) and two Side Channels for each side.
- The **601B (72" x 72") Skystar** shade comes with a Sonesse 500 Series RTS Motor, two 5050 Headboxes (one for the top, one for the bottom) and two Side Channels for each side.

Width in inches									
Height in inches	24"	30	36	42	48	54	60	66	72
	2236	2344	2454	2574	2684	2796	2906	3054	3166
	2272	2390	2508	2634	2752	2870	2988	3142	3262
	2312	2436	2562	2694	2818	2944	3068	3230	3356
	2352	2484	2614	2754	2886	3018	3150	3318	3450
	2392	2530	2668	2814	2954	3092	3230	3406	3546
	2430	2576	2722	2874	3020	3166	3310	3494	3640
	2470	2622	2774	2934	3088	3240	3392	3580	3734

Note: Outlined areas above are for Skystar 601A which utilizes the Sonesse 400 Series Motors.
For Contract Pricing, call us at 800.828.2500.

GROUP 19 SHADE PRICING

Pattern Name	Max. Width	Openness Factor	Can be Railroaded	Can be Seamed
FLOCKÉ	94"	N/A	N/A	N/A

- Prices include the following:
- The **601A (48" x 48") Skystar** shade comes with a Sonesse 400 Series RTS Motor, two 4040 Fascias (one for the top, one for the bottom) and two Side Channels for each side.
 - The **601B (72" x 72") Skystar** shade comes with a Sonesse 500 Series RTS Motor, two 5050 Headboxes (one for the top, one for the bottom) and two Side Channels for each side.

		Width in inches								
		24"	30	36	42	48	54	60	66	72
Height in inches	36"	2314	2442	2572	2710	2840	2972	3102	3268	3348
	42	2362	2502	2642	2790	2930	3070	3210	3384	3468
	48	2412	2560	2710	2868	3018	3168	3316	3500	3586
	54	2462	2620	2780	2946	3106	3266	3424	3616	3704
	60	2512	2680	2850	3026	3194	3364	3532	3732	3822
	66	2562	2740	2918	3104	3282	3462	3640	3848	3940
	72	2612	2800	2988	3184	3372	3560	3746	3962	4060

Note: Outlined areas above are for Skystar 601A which utilizes the Sonesse 400 Series Motors.
For Contract Pricing, call us at 800.828.2500.

GROUP 20 SHADE PRICING

Pattern Name	Max. Width	Openness Factor	Can be Railroaded	Can be Seamed
CRUSH	80"	N/A	N/A	N/A

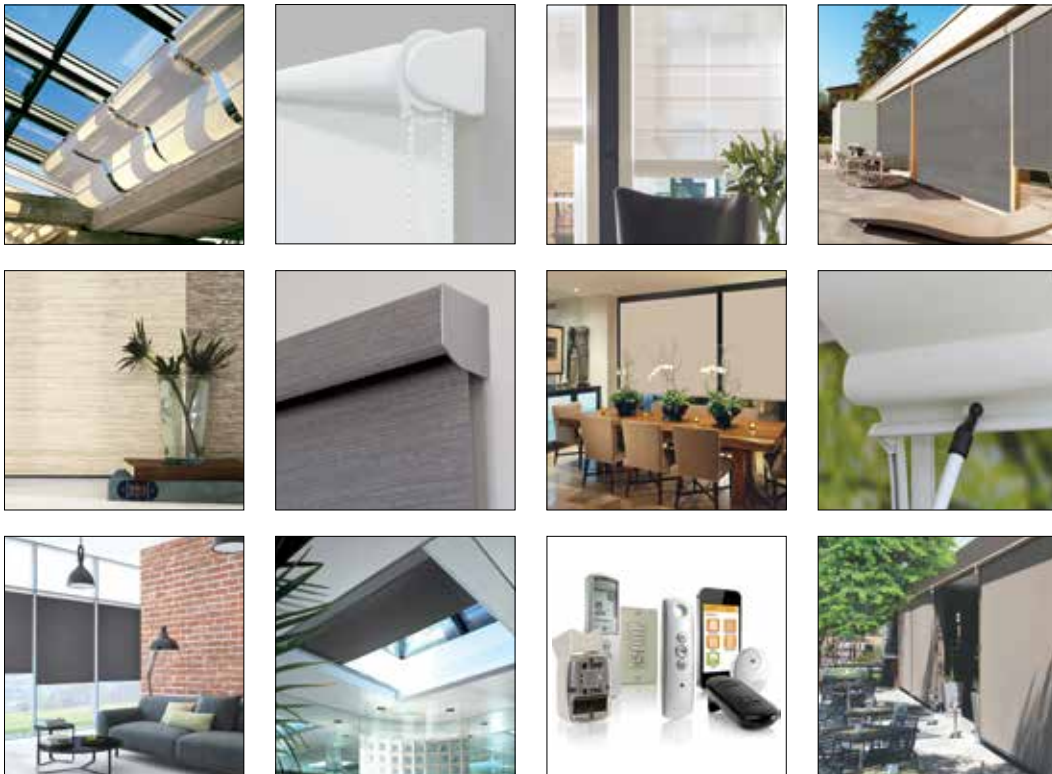
- Prices include the following:
- The **601A (48" x 48") Skystar** shade comes with a Sonesse 400 Series RTS Motor, two 4040 Fascias (one for the top, one for the bottom) and two Side Channels for each side.
 - The **601B (72" x 72") Skystar** shade comes with a Sonesse 500 Series RTS Motor, two 5050 Headboxes (one for the top, one for the bottom) and two Side Channels for each side.

		Width in inches								
		24"	30	36	42	48	54	60	66	72
Height in inches	36"	2298	2420	2548	2682	2808	2934	3024	3144	3224
	42	2342	2478	2614	2756	2892	3028	3120	3244	3326
	48	2390	2534	2680	2832	2976	3120	3218	3344	3430
	54	2438	2592	2746	2906	3060	3214	3314	3444	3532
	60	2486	2648	2812	2982	3144	3306	3410	3542	3634
	66	2534	2706	2878	3056	3228	3400	3508	3642	3736
	72	2582	2762	2944	3132	3312	3492	3604	3742	3838

Note: Outlined areas above are for Skystar 601A which utilizes the Sonesse 400 Series Motors.
For Contract Pricing, call us at 800.828.2500.

Solar Solutions™

When the sun is a problem... **solar solutions** is the answer



Photos courtesy of Mermet, USA & Phifer, Inc.

stay inspired online...
www.fabritecdesigns.com

