



BINDING OPTIONS

[for Natural Woven Shades & Panels™]



»twill bindings...

(available in 1" and 2" widths)

Binding can be used with most of our fabrics. For information on whether you can use binding with the fabric you have chosen, see the back of the swatch deck for that fabric.

You can add an exciting touch and more value to any Natural Woven Shade or Panel with our wide selection of colors and sizes of Binding. See the chart below for the different ways Twill Binding can be used.

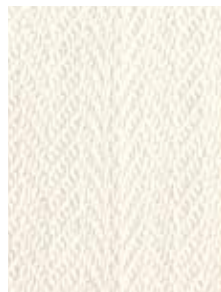
TWILL BINDINGS CAN BE USED AS SHOWN IN CHART BELOW.

BINDING TYPES	1" Twill Binding	2" Twill Binding
Sides of Shades	•	•
Bottom of Shades	•	•
Top of Ripplefold Panel	N/A	•
Sides of Ripplefold Panel	•	•
Bottom of Ripplefold Panel	•	•
Top of Grommet-Top Panel	N/A	N/A
Sides of Grommet-Top Panel	N/A	N/A
Bottom of Grommet-Top Panel	N/A	N/A

»twill binding colors



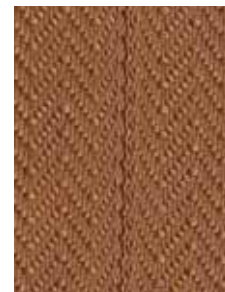
Salty



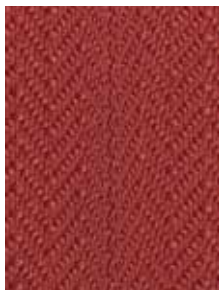
Conch



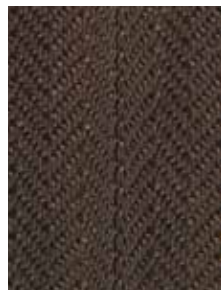
Beach



Sunbaked



Coral



Seaweed



Driftwood



Night

Note: Color accuracy varies from monitor to monitor. Always refer to our sample bindings before ordering.

»baja bindings...

(available in 2½" and 4" widths)

These special Baja Bindings must be used with the Grommet-Top Panel which requires a 4" band across the top. However, they can also be used with all Shades and with the Ripplefold Panel.

The Grommet-Top Natural Woven Panels requires 4" Binding across the top and either 2½" or 4" binding down the sides and across the bottom. (We recommend 2½".)

Binding will add an exciting and dramatic look to your Natural Woven Panel or Shade.

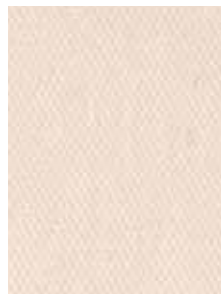
BAJA BINDINGS CAN BE USED AS SHOWN IN CHART BELOW.

BINDING TYPES	2½" Baja Binding	4" Baja Binding
Sides of Shades	•	•
Bottom of Shades	•	•
Top of Ripplefold Panel	•	•
Sides of Ripplefold Panel	•	•
Bottom of Ripplefold Panel	•	•
Top of Grommet-Top Panel	N/A	•
Sides of Grommet-Top Panel	•	•
Bottom of Grommet-Top Panel	•	•

»baja binding colors



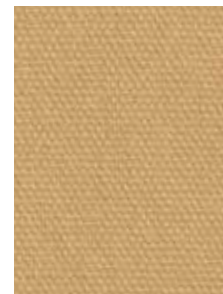
Sunset



Pearl



Shell



Dune



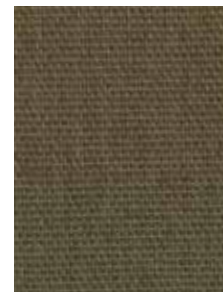
Bronze



Teak



Ebony



Kelp

Note: Color accuracy varies from monitor to monitor. Always refer to our sample bindings before ordering.

»a new addition...

grey binding

(available in 1", 2", 2½" and 4" widths)

This GREY binding can be used with most of our fabrics, our Natural Woven Shades, Ripplefold and Grommet-Top Natural Woven Panels.

The Ripplefold Panel requires a 2" or larger binding across the top. The Grommet-Top Panel requires a 4" binding across the top and either 2½" or 4" binding down the sides and across the bottom. (We recommend 2½".)

See chart below for the different ways this new GREY binding can be used.

OUR GREY BINDING CAN BE USED AS SHOWN IN CHART BELOW.

BINDING TYPES	1" Grey Binding	2" Grey Binding	2½" Grey Binding	4" Grey Binding
Sides of Shades	•	•	•	•
Bottom of Shades	•	•	•	•
Top of Ripplefold Panel	N/A	•	•	•
Sides of Ripplefold Panel	•	•	•	•
Bottom of Ripplefold Panel	•	•	•	•
Top of Grommet-Top Panel	N/A	N/A	N/A	•
Sides of Grommet-Top Panel	N/A	N/A	•	•
Bottom of Grommet-Top Panel	N/A	N/A	•	•

»grey binding color



Grey

Note: Color accuracy varies from monitor to monitor. Always refer to our sample bindings before ordering.