



# HEM BAR OPTIONS

[Rollstar™ & Sunstar™ Shades]



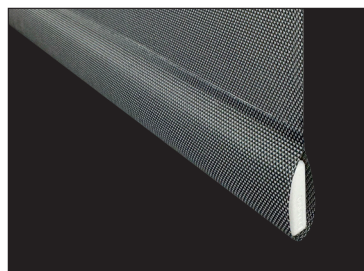


# »Rollstar™ ~ Hem Bar Options

In most cases, the finish at the bottom of a Rollstar shade will depend on the look that is desired.

We offer a **standard pocketed flat hem bar** (*open end*) for all our Rollstar shades.

An exposed flat hem bar is available upon request.



»POCKETED FLAT HEM BAR  
(Open End) - Standard



»EXPOSED FLAT HEM BAR  
(Available upon request)

## OUR STANDARD POCKETED FLAT HEM BAR:

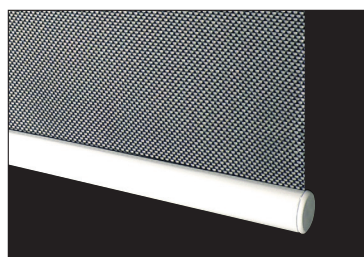
- Installs directly into the shade for a compact look.
- Constructed from high-grade aluminum for strength and warp resistance.
  - Weighted options are available for added stability.
- Hem bars are available in white, anodized clear and black finishes.
- Matching end caps provide a secure and durable fit.

---

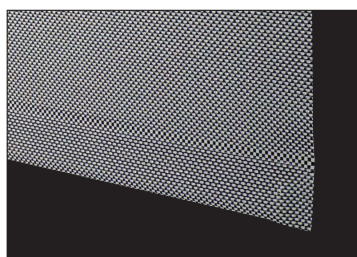
# »Sunstar™ ~ Hem Bar Options

We offer a **standard, round plain weighted hem bar** for all our Sunstar shades.

A flat, sealed hem pocket is available upon request.



STANDARD, ROUND - PLAIN



HEM POCKET, SEALED  
(Available upon request)

## ROLLSTAR & SUNSTAR HEM BAR COLORS:



White



Anodized Clear



Black