

coulisse
since 1992

Nature Concept

[PAPER  LINEN]



BINDING OPTIONS
[for Coulisse Roman Shades]


fabritec

FOR DESIGNERS AND
WINDOW COVERING PROFESSIONALS

TWILL BINDINGS

[available in 1" and 2" widths]

Binding can be used with most of our fabrics.

You can add an exciting touch and more value to any Coulisse~Fabritec Roman Shade with our wide selection of colors and sizes of Binding.

See the chart below for the different ways Twill Binding can be used.

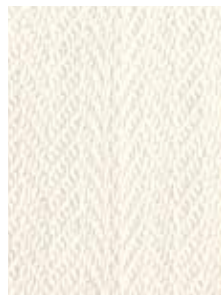
TWILL BINDINGS CAN BE USED AS SHOWN IN CHART BELOW.

BINDING TYPES	1" Twill Binding	2" Twill Binding
Sides of Shades	•	•
Bottom of Shades	•	•

»twill binding colors



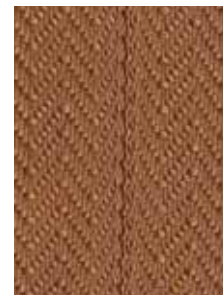
Salty



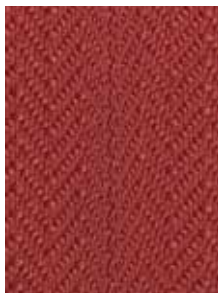
Conch



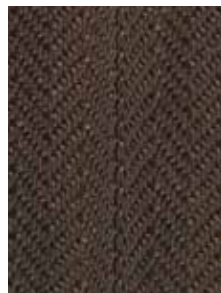
Beach



Sunbaked



Coral



Seaweed



Driftwood



Night

Note: Color accuracy varies from monitor to monitor. Always refer to our sample bindings before ordering.