

L-SERIES CLUTCHES

INSTALLATION INSTRUCTIONS

(for L32, L32 PLUS, L40, L40 PLUS, and L45, L45 PLUS Clutches)



L-SERIES CLUTCHES

INSTALLATION INSTRUCTIONS

Thank you for purchasing your new L-Series Clutches. They have been custom-made from the highest quality materials, to the dimensions you specified. With the proper installation and care, it will provide you with many years of beauty and trouble-free use.

Please read all instructions before you start so you will be familiar with the overall process.

Make sure you measure your window to ensure the clutches and shades will fit properly before beginning.

Getting Started

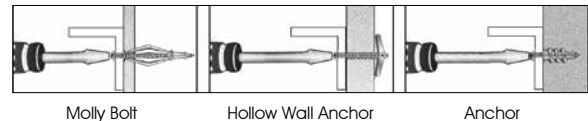
Remove the clutch and shade from the packaging. Keep the packaging until you have successfully installed the clutch and the shade.

TOOLS REQUIRED

- Pencil
- Awl
- Tape Measure
- Level
- Ladder or Stepstool
- Power Drill with the following bits:
 - 1/16" Drill Bit
 - 1/4" Hex Driver
 - Standard Screwdriver
 - Masonry Drill Bit (if drilling into concrete or brick)

FASTENER NOTES

For outside mount, it is best to attach the bracket to wood studs. If this is not possible, you will need to purchase special fasteners (see illustration below for examples).



Here are some HELPFUL TIPS:

- If you are using a special fastener, make sure it is designed to support the weight of the clutch and shade. Follow the fastener manufacturer's instructions carefully.
- When drilling into drywall or plaster, use a fastener designed for hollow wall applications (see illustration).
- When drilling into concrete, stone, brick, or tile, use appropriate plugs, anchors, or screws (not included).
- When drilling into metal, the included screws are sufficient. Pre-drill 1/8" holes.

L32 SERIES CLUTCHES

(This applies to L32 and L32 PLUS Clutches)

Mounting the Shade and Clutch

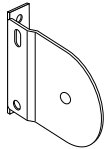
STEP 1 - INSTALLING THE BRACKETS.

Note: There are **two different brackets**.

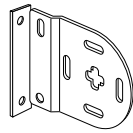
The idler end bracket has a simple round hole.

The continuous chain operator (CCO/or control end) bracket has a cross shaped hole. These brackets can be installed on a wall, ceiling, or inside installation.

The bracket to bracket dimension is the shade cloth width plus 1 3/4". Use a level to ensure a horizontal position.



Idler end bracket



CCO end bracket

STEP 2 - INSTALLING THE SHADE.

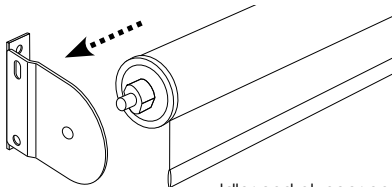
a. Begin by installing the idler end first.

Push the idler plunger into the idler end bracket.

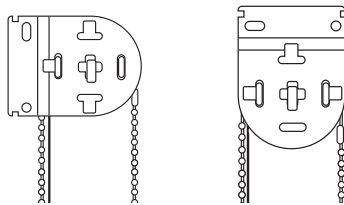
b. Slip the CCO end into the bracket. While keeping the idler end in position, lift the shade up into the bracket and align the CCO end pin into the middle of the cross shaped hole.

Gently slide into place.

Pull down to lock in place.



Idler end plunger and bracket



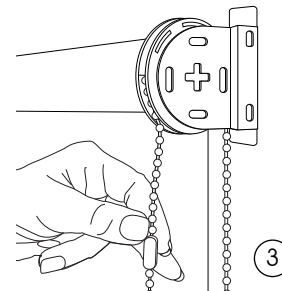
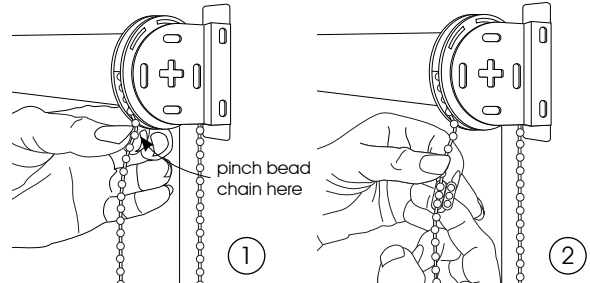
CCO end with end pin inserted

STEP 3 - SET THE LOWER LIMIT/STOP POSITION.

Lower the shade to the desired long point.

Then pinch the bead chain at this point on the front of the clutch, and place one of the bead chain stops here.

One extra bead chain stop is provided in case a change must be made.

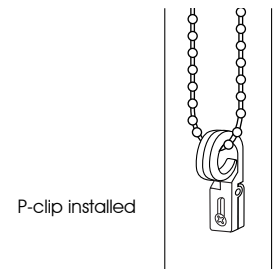


STEP 4 - ADD THE END CAPS FOR A FINISHED LOOK.

Note: The end caps cannot be used on an inside mount installation.

STEP 5 - INSTALL THE P-CLIP (HOLDDOWN).

Depress the p-clip holddown and firmly attach to the wall. **DO NOT PULL THE BEAD CHAIN TAUT**, as this will prevent the bead chain from operating smoothly.



Caring for your L32 Series Clutches & Roller shades

Your clutches and roller shades will provide you with years of beauty and pleasure with minimal care and cleaning.

- Vacuum using a brush or dust head attachment.
- Dust lightly using a soft, clean cloth.
- Never immerse the clutches or shades in water or liquids of any type.

L40 SERIES CLUTCHES

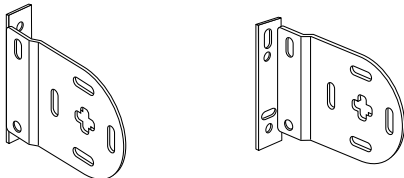
(This applies to L40, L40 PLUS, L45 & L45 PLUS Clutches)

Mounting the Shade and Clutch

STEP 1 - INSTALLING THE BRACKETS.

The brackets are universal and can be used on either side as well as for wall, ceiling or inside installation.

The bracket to bracket dimension is the shade cloth width plus 1 3/8". Use a level to ensure a horizontal position.

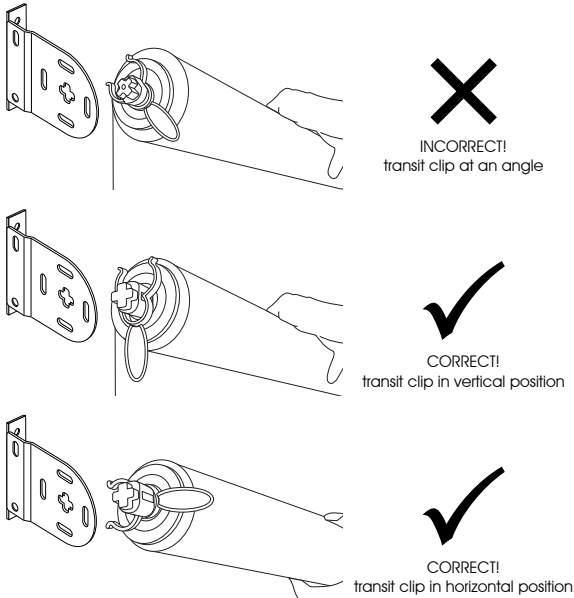


Universal brackets

STEP 2 - INSTALLING THE SHADE.

a. Begin by installing the idler end first.

There is a transit clip on the idler end of the shade. The transit clip should be positioned either straight up and down, or horizontal, in order to line up the idler plunger of the idler end with the cross shaped hole in the bracket. See illustrations below.



b. Once the idler end is seated, **REMOVE the TRANSIT CLIP.**

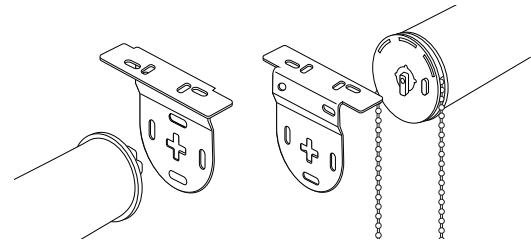
Save this clip as it will be reinstalled in Step 2d.

STEP 2 - INSTALLING THE SHADE (continued).

c. Slip the CCO end into the bracket.

While keeping the idler end in position, lift the shade up into the bracket and align the CCO end pin into the middle of the cross shaped hole.

Gently slide in place and pull down to lock in place.



Insert CCO end

d. Remember to slip the transit clip back onto the idler end.

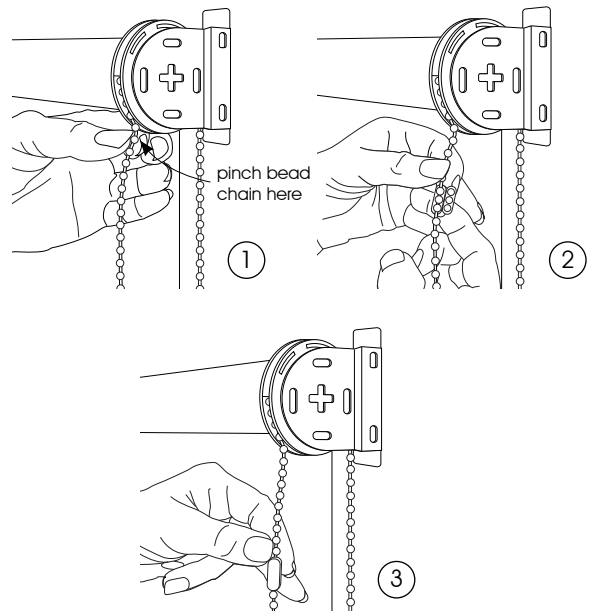
The transit clip locks the spring-loaded idler end of a roller shade, so that it cannot retract. It also prevents the roller shade from slipping out of its brackets during shipment.

STEP 3 - SET THE LOWER LIMIT/STOP POSITION.

Lower the shade to the desired long point.

Then pinch the bead chain at this point on the front of the clutch, and place one of the bead chain stops here.

One extra bead chain stop is provided in case a change must be made.

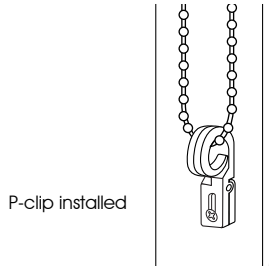


STEP 4 - ADD THE END CAPS FOR A FINISHED LOOK.

Note: The end caps cannot be used on an inside mount installation.

STEP 5 - INSTALL THE P-CLIP (HOLDDOWN).

Depress the p-clip holddown and firmly attach to the wall. DO NOT PULL THE BEAD CHAIN TAUT, as this will prevent the bead chain from operating smoothly.



Caring for your L40 and L45 Series Clutches & Roller shades

Your clutches and roller shades will provide you with years of beauty and pleasure with minimal care and cleaning.

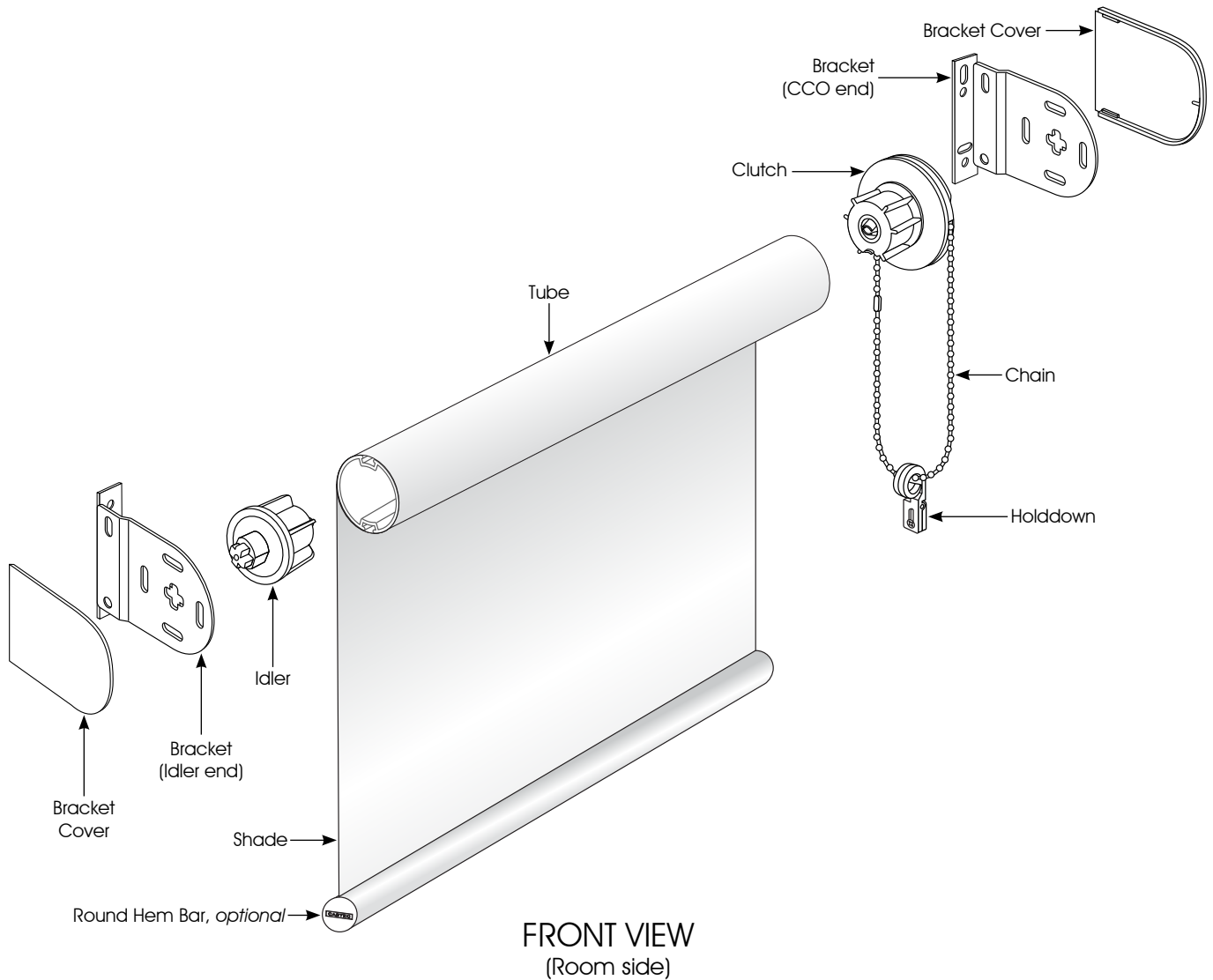
- Vacuum using a brush or dust head attachment.
- Dust lightly using a soft, clean cloth.
- Never immerse the clutches or shades in water or liquids of any type.

.....

NOTE:

Call us at 800.828.8500 if you have any questions.

L-SERIES CLUTCHES DETAILED DIAGRAM



IMPORTANT!

1. Please read installation instructions first (included with hardware).
2. The brackets should be 1 $\frac{3}{8}$ " wider than the cloth width.
3. Install the idler end of the shade first!