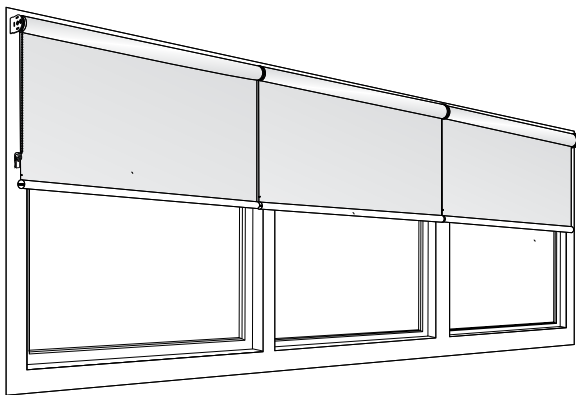


»Duo Link



»Multi Link

DUO & MULTI LINK SYSTEMS

INSTALLATION INSTRUCTIONS

(for the L40, L40 PLUS and L45, L45 PLUS SYSTEMS)



DUO & MULTI LINK SYSTEMS

INSTALLATION INSTRUCTIONS

Thank you for purchasing your new Duo/Multi Link Systems. They have been custom-made from the highest quality materials to the dimensions you specified. With the proper installation and care, it will provide you with many years of beauty and trouble-free use.

Please read all instructions before you start so you will be familiar with the overall process.

Make sure you measure your window to ensure the links, clutches and shades will fit properly before beginning.

Getting Started

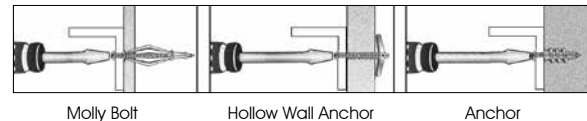
Remove the clutch and shade from the packaging. Keep the packaging until you have successfully installed the Duo/Multi Link system, clutch and shade.

TOOLS REQUIRED

- Pencil
- Awl
- Tape Measure
- Level
- Ladder or Stepstool
- Putty Knife
- Power Drill with the following bits:
 - 1/16" Drill Bit
 - 1/4" Hex Driver
 - Standard Screwdriver
 - Masonry Drill Bit (if drilling into concrete or brick)

FASTENER NOTES

For outside mount, it is best to attach the bracket to wood studs. If this is not possible, you will need to purchase special fasteners (see illustration below for examples).

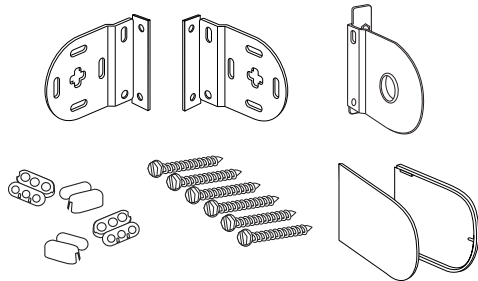


Here are some HELPFUL TIPS:

- If you are using a special fastener, make sure it is designed to support the weight of the clutch and shade. Follow the fastener manufacturer's instructions carefully.
- When drilling into drywall or plaster, use a fastener designed for hollow wall applications (see illustration).
- When drilling into concrete, stone, brick, or tile, use appropriate plugs, anchors, or screws (not included).
- When drilling into metal, the included screws are sufficient. Pre-drill 1/8" holes.

BEFORE YOU BEGIN, VERIFY THAT YOU HAVE ALL THE NECESSARY PARTS AND PIECES:

- **PACKAGE** - Contains two universal end brackets with a cross shaped hole, center brackets (one only for the Duo Link application, one or two for the Multi Link, depending on the application), two end caps, two to four bead chain stops, and six to eight installation screws.



Illustrations, clockwise from top left:
Universal end brackets, Coupling/Center bracket, End caps,
Installation screws and Bead chain stops.

STEP 1 - INSTALLING THE BRACKETS.

Use a level to ensure a horizontal position. The end brackets have a cross shaped hole and are universal. They can be used on either side as well as for wall, ceiling or inside installation. The coupling/center bracket(s) have a center hole.

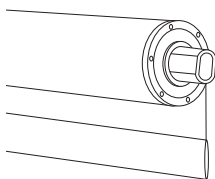
The outside bracket to bracket should be $1\frac{3}{8}$ " greater than the sum of the cloth widths, plus $\frac{3}{8}$ " for each space.
Example: Cloth width for shades are 24" x 2 shades = 48" plus $\frac{3}{8}$ " for the space between the shades plus $1\frac{3}{8}$ " for bracket allowance = $49\frac{3}{4}$ " bracket to bracket.

STEP 2 - INSTALLING THE SHADES.

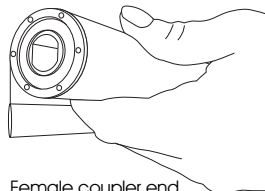
FOR THE MULTI LINK SYSTEM

- Sort the shades by looking closely at the ends of the shades. One of the shades will have a control end for the lifting mechanism (either a MOTOR or CCO) on one side, and a male coupler on the other.

The other shade will have an idler end on one side and a female coupler on the other side. If using a three shade application, one shade will have female coupler on one end and a male coupler on the other end.



Male coupler end with flat sides

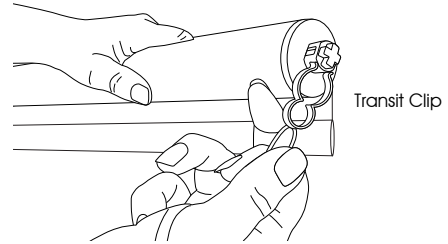


Female coupler end with flat sides

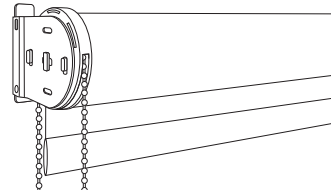
STEP 2 - INSTALLING THE SHADES (CONTINUED).

FOR THE MULTI LINK SYSTEM

Note: On the shade with the idler end, remove the transit clip. Save this clip as it will be reinstalled once the installation is complete.

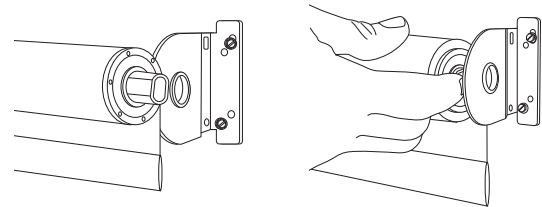


- Begin by installing the first shade with the control end. The control end of this shade must be installed first. Gently slide the bracket pin into the middle of the cross shaped hole of the end bracket, and pull down to lock in place.

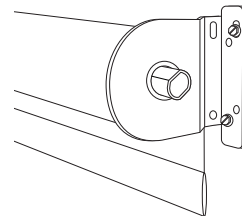


- Then depress the male coupler end in order to slide into the center hole of the coupling bracket.

Note: This coupler has two flat sides.



Male coupler end with flat sides

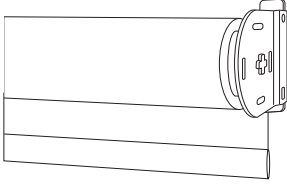


Inserted male coupler end

STEP 2 - INSTALLING THE SHADES (CONTINUED).

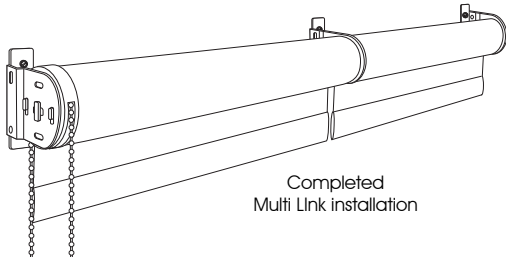
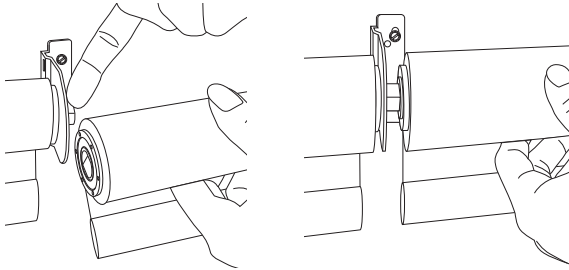
FOR THE MULTI LINK SYSTEM

d) Next, install the second shade with the idler end. The idler end of this shade must be installed first. Place the cross shaped idler end in the cross shaped hole.



e) Then depress the male coupler end of the control end shade to ease the female end of the idler end shade into place (a putty knife is helpful for this step) making sure that the flat sides of the female coupler line up with the flat sides of the male coupler.

See illustrations below.



f) If using a three shade application, the last shade will need to be eased into place matching the female coupler on one end of the shade with the male coupler on the adjacent shades.

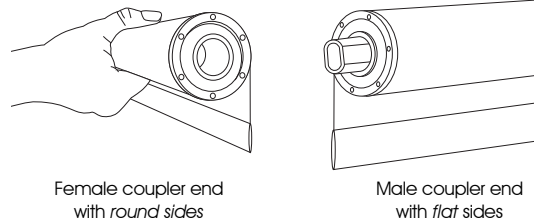
Remember to add the transit clip back when installation is complete!

STEP 2 - INSTALLING THE SHADES.

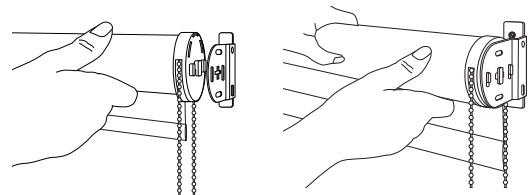
FOR THE DUO LINK SYSTEM

a) Sort the shades based on your order. Both of the shades will have a control end for the lifting mechanism (either a MOTOR or CCO) on one side. One shade will have a male coupler on the end opposite the control end.

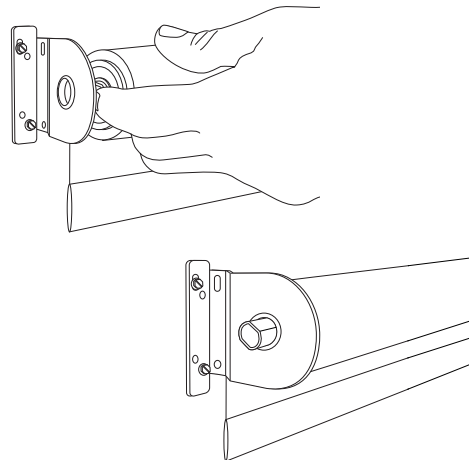
The other shade will have a round end female coupler on the other side. See illustrations below.



b) Begin by installing the shade with the male coupler end. The control end of this shade must be installed first. Gently slide the bracket pin into the middle of the cross shaped hole of the end bracket, and pull down to lock in place.



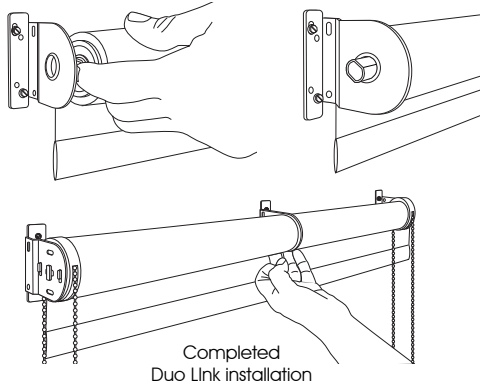
c) Then depress the male coupler end in order to slide into the center hole of the coupling bracket.



STEP 2 - INSTALLING THE SHADES (CONTINUED).

FOR THE DUO LINK SYSTEM

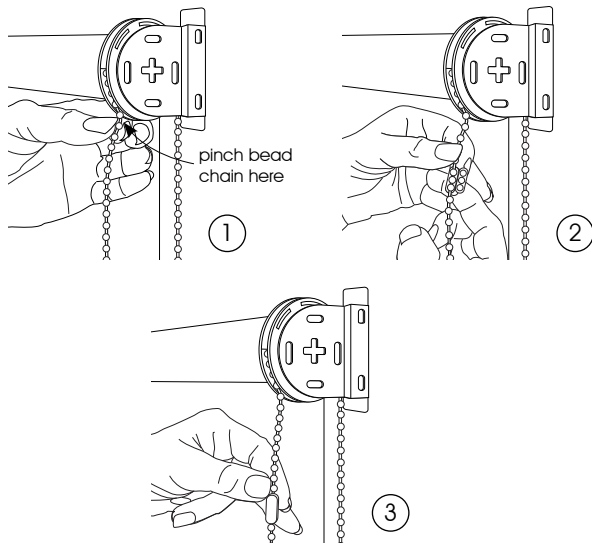
- d) Next install the shade with the female coupler end. The control end of this shade must be installed first. Gently slide the bracket pin into the middle of the cross shaped hole of the end bracket, and pull down to lock in place.
- e) Then depress the male coupler end of the first installed shade to ease the female end of this shade into place (a putty knife is helpful for this step).



STEP 3 - SET THE LOWER LIMIT/STOP POSITION.

Lower the shade to the desired long point. Then pinch the bead chain at this point on the front of the clutch, and place one of the bead chain stops here. One extra bead chain stop is provided in case a change must be made.

If installing a Duo Link, this step will be necessary for both shades.

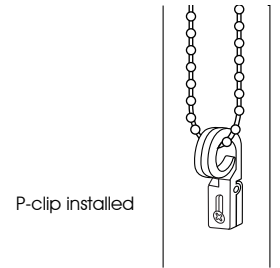


STEP 4 - ADD THE END CAPS FOR A FINISHED LOOK.

Note: The end caps cannot be used on an inside mount installation.

STEP 5 - INSTALL THE P-CLIP (HOLDDOWN).

Depress the p-clip holddown and firmly attach to the wall. DO NOT PULL THE BEAD CHAIN TAUT, as this will prevent the bead chain from operating smoothly.



Caring for your Duo & Multi Link Systems, Clutches & Roller shades

Your Duo or Multi Link systems, clutches and roller shades will provide you with years of beauty and pleasure with minimal care and cleaning.

- Vacuum using a brush or dust head attachment.
- Dust lightly using a soft, clean cloth.
- Never immerse the clutches or shades in water or liquids of any type.

Call us at 800.828.2500 if you have any questions.