



# Natural Woven Panels (Ripplefold Decorative Rod)

## INSTALLATION INSTRUCTIONS



## Natural Woven Panels (Ripplefold Decorative Rod)

### INSTALLATION INSTRUCTIONS

Thank you for purchasing your new Natural Woven Panels. They have been custom-made from the highest quality materials to the dimensions you specified. With the proper installation and care, it will provide you with many years of beauty and trouble-free use.

Please read all instructions before you start so you will be familiar with the overall process.

Make sure you measure your window to ensure the shade will fit properly before beginning.

### Getting Started

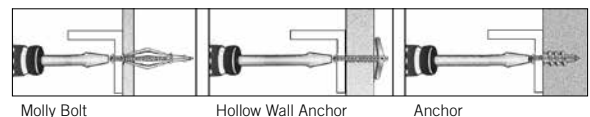
Remove the Natural Woven Panels from the packaging. Keep the packaging until you have successfully installed the panels.

### Tools Required

- Pencil
- Awl
- Tape measure
- Level
- Ladder or stepstool
- Power drill with the following bits:
  - 1/16" drill bit
  - 1/4" hex driver
  - Standard screwdriver
  - Masonry drill bit (if drilling into concrete or brick)

### Fastener Notes

For outside mount, it is best to attach the base plate to wood studs. If this is not possible, you will need to purchase special fasteners (see illustration for examples).



### Here are some helpful tips:

- If you are using a special fastener, make sure it is designed to support the weight of the panels. Follow the fastener manufacturer's instructions carefully.
- When drilling into drywall or plaster, use a fastener designed for hollow wall applications (see illustration).
- When drilling into concrete, stone, brick, or tile, use appropriate plugs, anchors, or screws (not included).
- When drilling into metal, the included screws are sufficient. Pre-drill 1/8" holes.

**Before you begin, verify that you have all the necessary pieces and parts:**

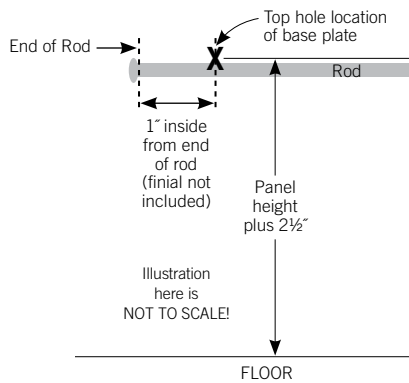
- Panels - Note the panel sizes.
- Rods - Note the rod sizes.
- Baton - One for a single panel, two for a pair.
- Box of Finials (with allen wrench for attaching the finial to the rod)
- Box(es) of Brackets - Please note the bracket is a three piece item - a base plate, a base plate cover, and the bracket arm. (The box also contains two allen wrenches for tightening all the parts.)
- Packet of pendants.
- Cup Hook(s) & Drapery Pin(s).

**Mounting the Panels**

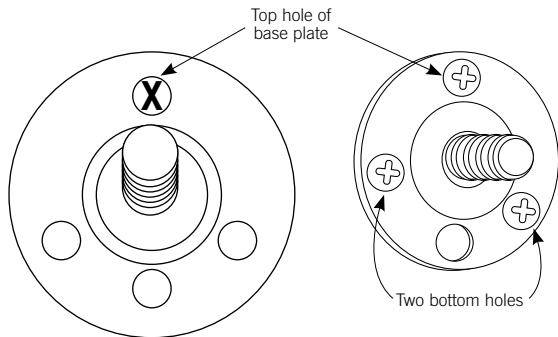
**Step 1: Mark the mounting locations of the top hole for the base plates.**

The top hole location of the base plate should be:

- » The panel length plus 2½" (this allows for approximately ½" floor clearance) / **AND** 1" inside from each end of the rod.
- » See illustration below.



Place the top hole of the base plate over this mark, then mark the two bottom holes as shown.



The center brackets should be spaced approximately 24" to 30" apart.

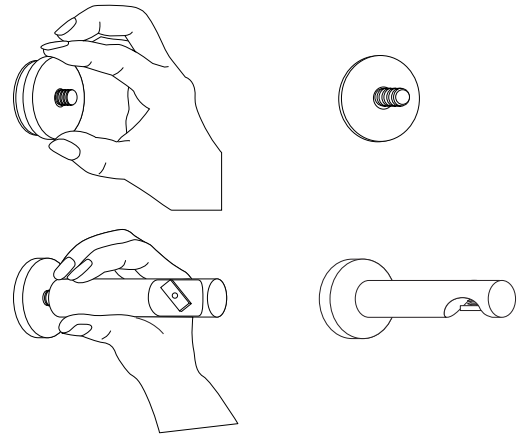
**Step 2: Drill the mounting holes.**

Using the awl, push or lightly tap through the wall at the marked locations in step 1.

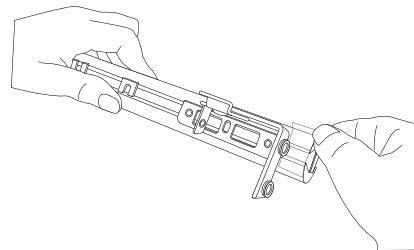
If you hit wood, then simply secure the base plate to the wall with the provided screws; otherwise, decide on the proper fastener to secure the base plate (see fastener notes).

**Step 3: Once the base plate is firmly attached to the wall, assemble bracket.**

Slip the base plate cover over the screw post, then screw the bracket arm onto the screw post.

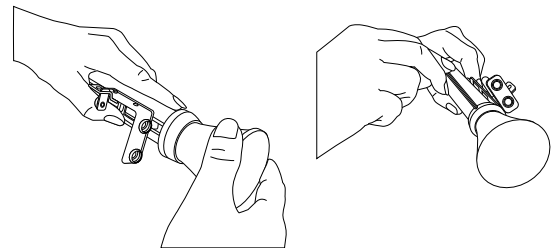


**Step 4: Remove the shipping tape from the ends of the rod.**



**Step 5: Attach finial to end of rod.**

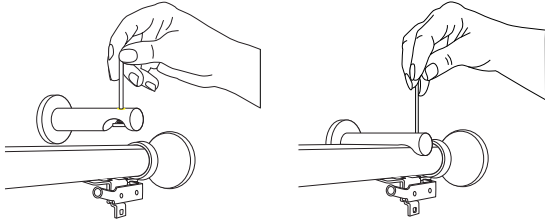
Position the finial so the set screw will be on the back side of the rod. Tighten the set screws with the enclosed allen wrench.



**Step 6: Attach rod to bracket.**

Position the lozenge nut above the channel, push rod into bracket.

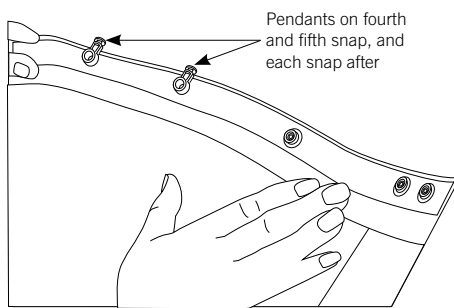
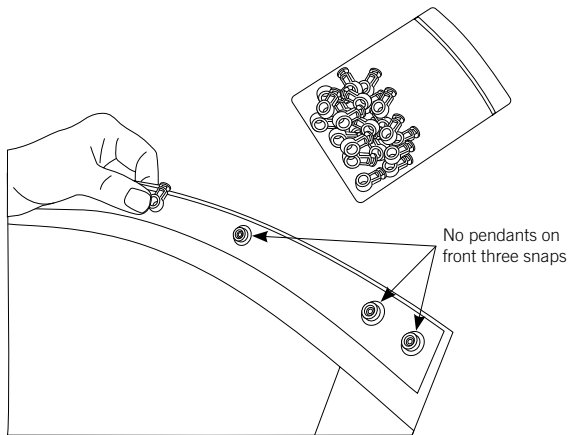
Tighten the set screw, the lozenge nut is self-locking, make sure to turn to the point where you overcome the resistance that you feel. Then tighten firmly.



**Step 7: Attach pendants to the snap tape of the panels.**

Locate the pendants (provided in a separate bag).

Note the first three snaps will be attached to the butt master, so the first pendant will actually snap on the fourth snap from the leading edge.

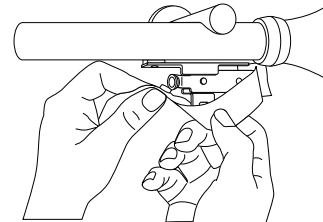
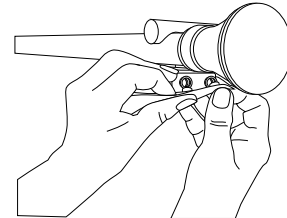


**Step 8: Snap the panel onto the butt master and carriers.**

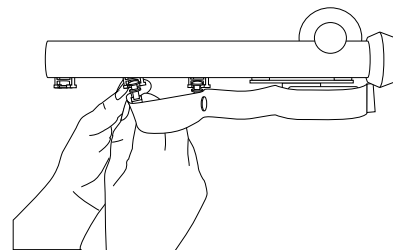
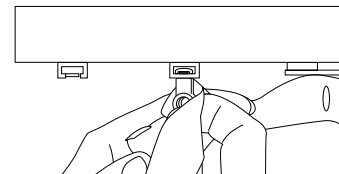
*For demonstration purposes, we are showing the snap tape only in the illustrations below.*

The first two snaps will attach to the front leading edge of the butt master.

The third snap will attach to the back of the butt.



The fourth snap and pendant (and each snap and pendant afterwards) will slide into the carrier base. See illustrations below.



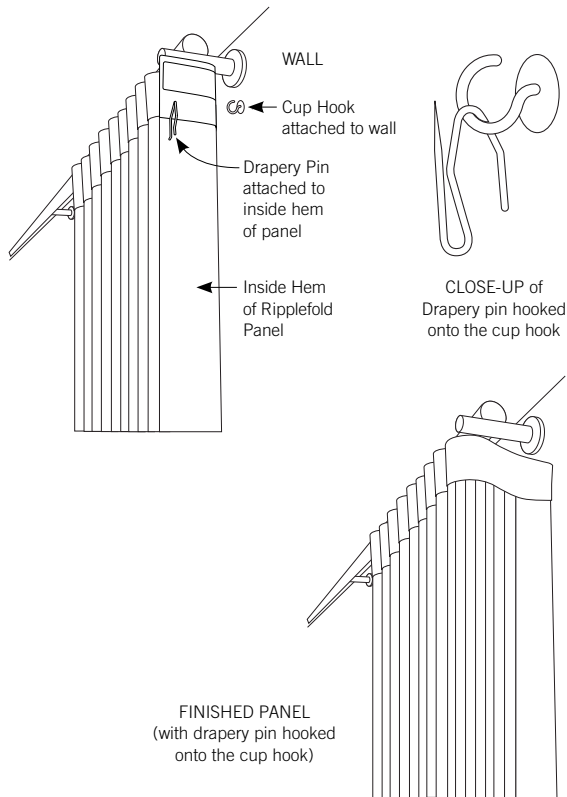
### Step 9: Finishing the return ends of the panel(s).

The ripplefold panel(s) is designed to return to the wall.

A cup hook is supplied and will need to be screwed to the wall.

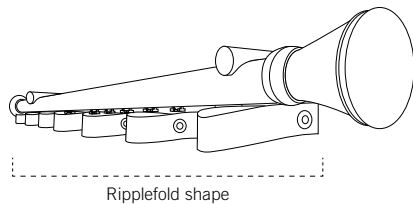
Attach the drapery pin to the inside hem of the panel. Hook the panel to the cup hook on the wall.

See illustrations below.



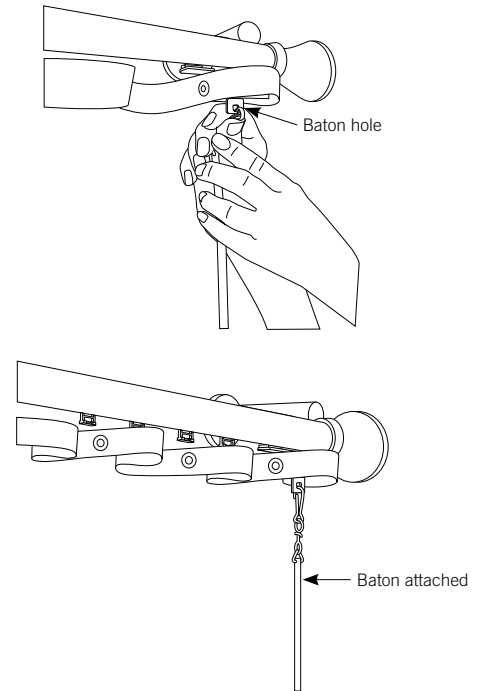
### Step 10: Dress the panels. They should serpentine back and forth as shown below.

The folds of the panels should be dressed so the folds serpentine back and forth to create a soft wavy (ripplefold) shape.



### Step 11: Attach the baton(s).

Locate the baton hole on the bottom of the butt master. Snap baton into hole.



### Operating Your Natural Woven Panel

Simply push the baton to open and pull to close the panels.

### Caring for Your Natural Woven Panels

Your Natural Woven Panels will provide you with years of beauty and pleasure with minimal care and cleaning.

- Vacuum using a brush or dust head attachment.
- Dust lightly using a soft, clean cloth.
- Never immerse the panels in water or liquids of any type.
- Call us at 800.828.2500 if you have any questions.

Fabritec, LLC.  
7531 Coldwater Canyon Avenue  
North Hollywood, CA 91605  
t) 818.503.8300  
f) 818.503.8360

[www.castec.com](http://www.castec.com)  
[www.fabritecdesigns.com](http://www.fabritecdesigns.com)