

Safe and Silent Solutions
for Roller Shades

SMARTROLL™ 24-1

INSTALLATION INSTRUCTIONS



ROLLER SHADES

INSTALLATION INSTRUCTIONS ~ SMARTROLL™ 24-1

Thank you for purchasing your new Smartroll shades. They have been custom-made from the highest quality materials to the dimensions you specified. With the proper installation and care, it will provide you with many years of beauty and trouble-free use.

Please read all instructions before you start so you will be familiar with the overall process.

Make sure you measure your window to ensure the shade will fit properly before beginning.

Getting Started

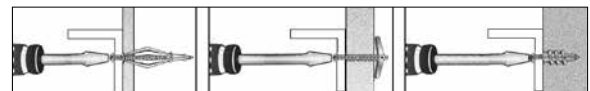
Remove the Smartroll shades from the packaging. Keep the packaging until you have successfully installed the shades.

TOOLS REQUIRED

- Pencil
- Awl
- Tape Measure
- Level
- Ladder or Stepstool
- Power Drill with the following bits:
 - 1/16" Drill Bit
 - 1/4" Hex Driver
 - Standard Screwdriver
 - Masonry Drill Bit (if drilling into concrete or brick)

FASTENER NOTES

For outside mount, it is best to attach the bracket to wood studs. If this is not possible, you will need to purchase special fasteners (see illustration below for examples).



Molly Bolt

Hollow Wall Anchor

Anchor

Here are some HELPFUL TIPS:

- If you are using a special fastener, make sure it is designed to support the weight of the shades. Follow the fastener manufacturer's instructions carefully.
- When drilling into drywall or plaster, use a fastener designed for hollow wall applications (see illustration).
- When drilling into concrete, stone, brick, or tile, use appropriate plugs, anchors, or screws (not included).
- When drilling into metal, the included screws are sufficient. Pre-drill 1/8" holes.

BEFORE YOU BEGIN, VERIFY THAT YOU HAVE ALL THE NECESSARY PARTS AND PIECES:

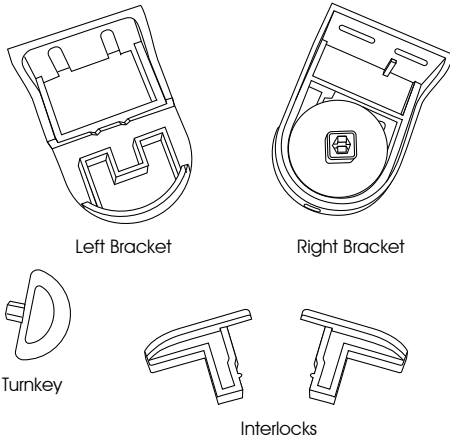
• **SHADES - NOTE THE SHADE SIZE. THIS IS VERY IMPORTANT.**

For shade sizes less than 36 $\frac{7}{8}$ " tip to tip wide, refer to the installation instructions for Smartroll™ 24-1.

For shade sizes greater than 36 $\frac{7}{8}$ " tip to tip wide, refer to the installation instructions for Smartroll™ 32-1.

- **PACKAGE** - Contains 2 brackets (left and right), 2 interlocks, and 1 turnkey.

PACKAGE CONTENTS



If this Smartroll technology is new to you, or you have never installed a Smartroll shade before, please go to the [YouTube](https://www.youtube.com/watch?v=...) video at: www.smartroll.com

Scroll down to the "Technological Innovation" section and you will see the video for the "Smartroll 24-1 Installation Tour" on the left side.

Pay particular attention to Steps 2/7 through 7/7 in this video. Step 1/7 has already been completed at the factory.

NOTE:

The following directions are based on a SMARTROLL 24-1 STANDARD ROLL SHADE (for shades less than 36 $\frac{7}{8}$ " width tip to tip). If you choose to reverse roll or turn the shade around, you will also need to reverse the brackets as well as the directions for increasing and decreasing the speed of the shade.

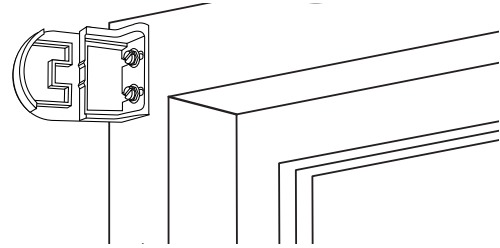
Mounting the Shades

STEP 1 - BRACKET INSTALLATION.

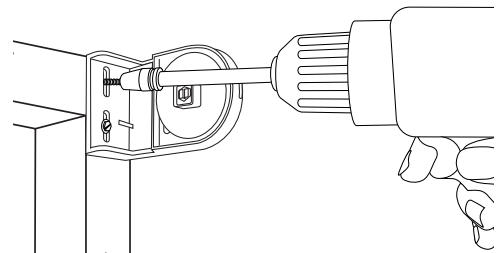
Attach the bracket to the wall. Use a pencil to mark the drilling points and the leveler to keep a proper horizontal position. Please note the brackets are marked left and right.

The left bracket is designed to work with the brake wheel and the right bracket is designed to work with the spring drive wheel.

(Note: If you should decide to turn the shade around for a reverse roll, the brackets will also need to be reversed.)



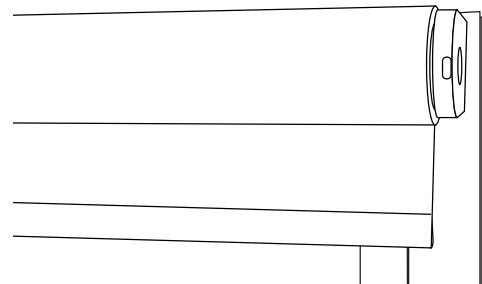
Left Bracket (BRAKE WHEEL BRACKET)



Right Bracket (SPRING DRIVE WHEEL BRACKET)

STEP 2 - ROLLER SHADE INSTALLATION, RIGHT SIDE.

Attach the right end of the roller shade to the right bracket. Make sure the spring drive wheel end is aligned properly and inserted into the bracket pin.

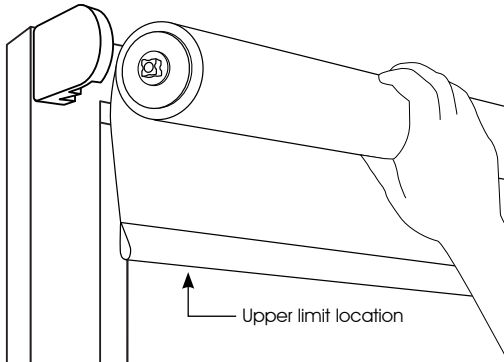


STEP 3 - SET THE HOME POSITION (THE UPPER LIMIT STOP).

This is the location where the shade will stop when fully raised.

Make sure the right side of the shade remains in the bracket.

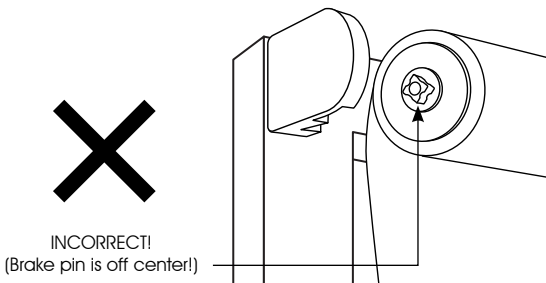
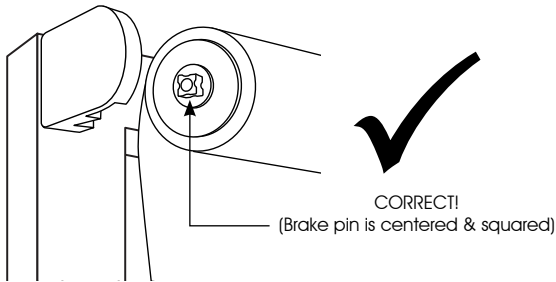
Roll the roller shade to your desired length, see picture below. Once you have your length set, attach the roller shade into the left side bracket.



SETTING THE HOME POSITION

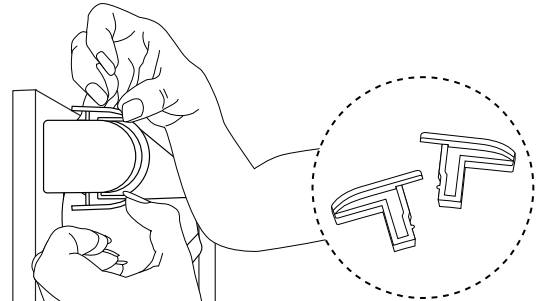
STEP 4 - ROLLER SHADE INSTALLATION, LEFT SIDE.

Insert the left side of the roller shade into the left bracket. Gently position the brake pin so it is centered and squared, then pull forward until the roller shade snaps into place.



STEP 5 - SECURING INTERLOCKS.

Secure the roller shade with interlocks by inserting them into the left side bracket. See illustration below.



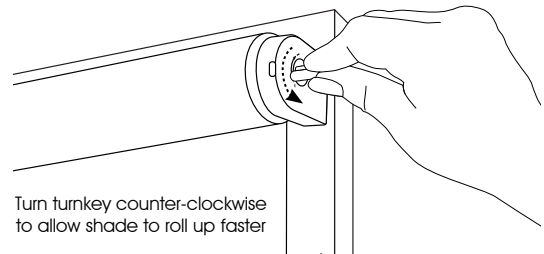
Interlocks - locks in and ensures safe use of the roller shade

STEP 6 - ADJUSTING THE SPEED.

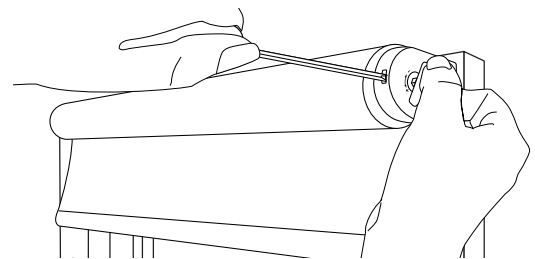
FOR AN OUTSIDE INSTALLATION

While holding the shade in place, insert the turnkey into the right bracket.

Turning it counter-clockwise will allow the shade to roll up faster. More turns will increase the speed at which the shade rises.



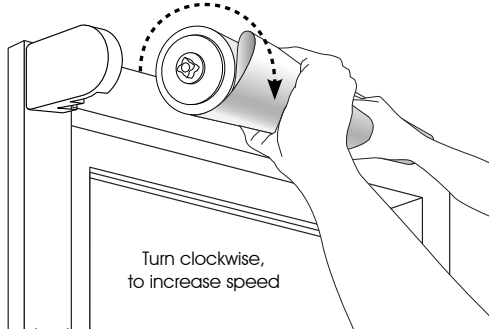
To decrease the speed, place the turnkey in the right side bracket and gently support it, while placing a mini screwdriver in the slot on the front of the bracket. This will release the tension and allow the shade to rise slower.



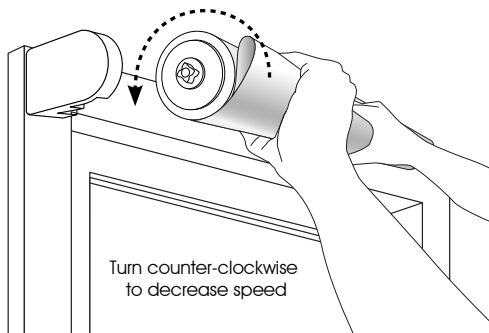
STEP 6- ADJUSTING THE SPEED (continued).

FOR AN INSIDE INSTALLATION

While keeping the shade inserted in the right bracket (the spring drive wheel side), gently lift the left side (the brake wheel side) out of the bracket and turn the shade in the clockwise direction to increase the speed.



To decrease the speed, turn the shade in the counter-clockwise direction. Before returning the left side of the shade back into the bracket, make sure you roll the shade to the desired home position.

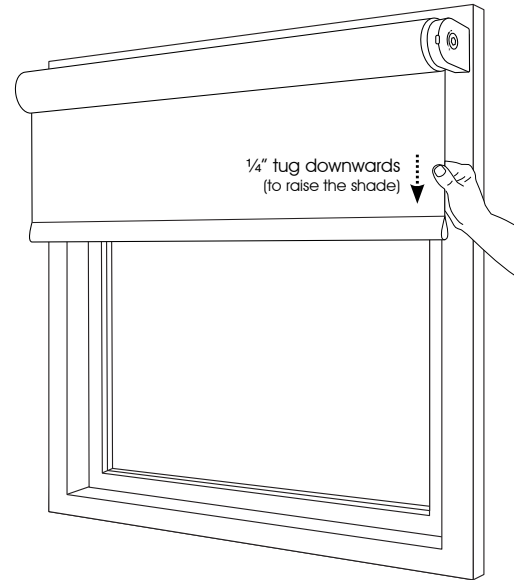


Operating your Smartroll Shades

Unlike the typical spring shade, a Smartroll shade requires a minimal 1/4" tug. No need to pull hard or long. A gentle tug will do the trick!

It will rise and stop to the exact location set in STEP 3. No more fly-away shade that will bang against the window!

No cords or hazardous chains. Trouble-free and secure use.



Caring for your Smartroll Shades

Your Smartroll shades will provide you with years of beauty and pleasure with minimal care and cleaning.

- Vacuum using a brush or dust head attachment.
- Dust lightly using a soft, clean cloth.
- Never immerse the shades in water or liquids of any type.

Call us at 800.828.2500 if you have any questions.