

## Natural Woven Panels (Ripplefold White Track)

### INSTALLATION INSTRUCTIONS

Thank you for purchasing your new Natural Woven Panels. They have been custom-made from the highest quality materials to the dimensions you specified. With the proper installation and care, it will provide you with many years of beauty and trouble-free use.

Please read all instructions before you start so you will be familiar with the overall process.

Make sure you measure your window to ensure the shade will fit properly before beginning.

### Getting Started

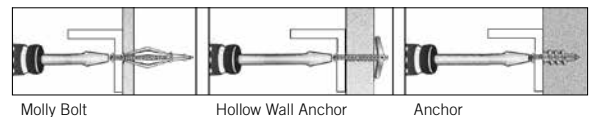
Remove the Natural Woven Panels from the packaging. Keep the packaging until you have successfully installed the panels.

### Tools Required

- Pencil
- Awl
- Tape measure
- Level
- Ladder or stepstool
- Power drill with the following bits:
  - 1/16" drill bit
  - 1/4" hex driver
  - Standard screwdriver
  - Masonry drill bit (if drilling into concrete or brick)

### Fastener Notes

For outside mount, it is best to attach the base plate to wood studs. If this is not possible, you will need to purchase special fasteners (see illustration for examples).



### Here are some helpful tips:

- If you are using a special fastener, make sure it is designed to support the weight of the panels. Follow the fastener manufacturer's instructions carefully.
- When drilling into drywall or plaster, use a fastener designed for hollow wall applications (see illustration).
- When drilling into concrete, stone, brick, or tile, use appropriate plugs, anchors, or screws (not included).
- When drilling into metal, the included screws are sufficient. Pre-drill 1/8" holes.

## Natural Woven Panels (Ripplefold White Track)

### INSTALLATION INSTRUCTIONS



**Before you begin, verify that you have all the necessary pieces and parts:**

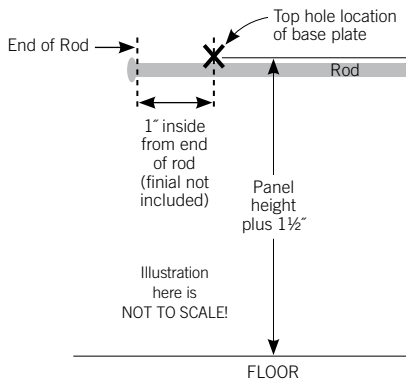
- Panels - Note the panel sizes.
- Rods - Note the rod sizes.
- Baton - One for a single panel, two for a pair.
- Box of Brackets.
- Packet of pendants.

**Mounting the Panels**

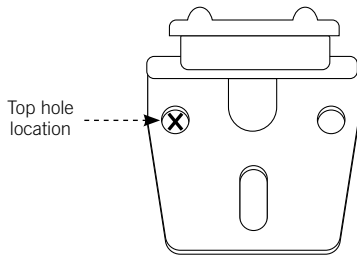
**Step 1: Mark the mounting locations of the top hole for the base bracket.**

The top hole location of the base bracket should be:

- The panel length plus 1 1/2" (this allows for approximately 1/2" floor clearance) / AND 1" inside from each end of the rod.
- See illustration below.



- Place the outside top hole of the base bracket over the "X" mark as shown in illustration below.



- Center bracket(s) should be spaced approximately 30" to 36" apart.

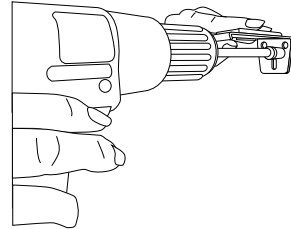
**Step 2: Drill the mounting holes.**

Using the awl, push or lightly tap through the wall at the marked locations in step 1.

If you hit wood, then simply secure the base plate to the wall with the provided screws; otherwise, decide on the proper fastener to secure the base plate (see fastener notes).

**Step 3: Attach the brackets to the wall.**

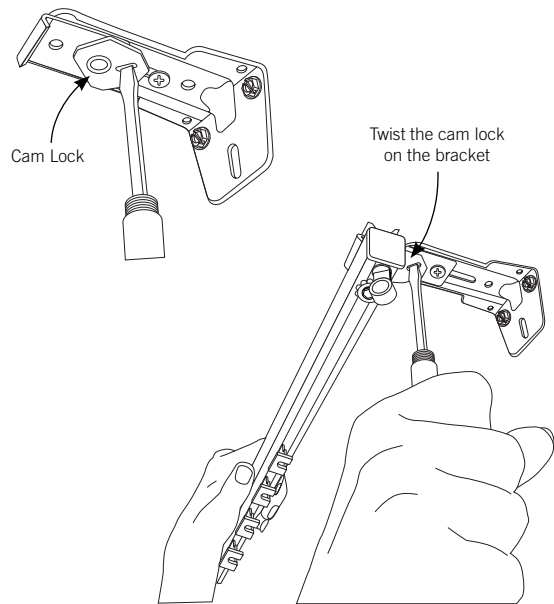
Simply attach the bracket to the wall with screws or fasteners.



**Step 4: Attach rod to bracket.**

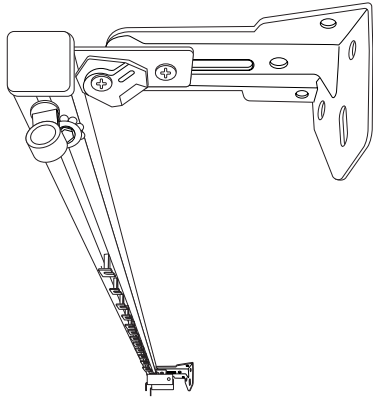
Locate the cam lock on the bracket.

With a screw driver, twist the cam lock until it catches on the channel on the underside of the rod.



**Step 4: Attach rod to bracket (continued)**

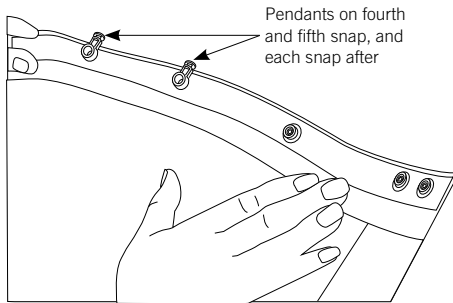
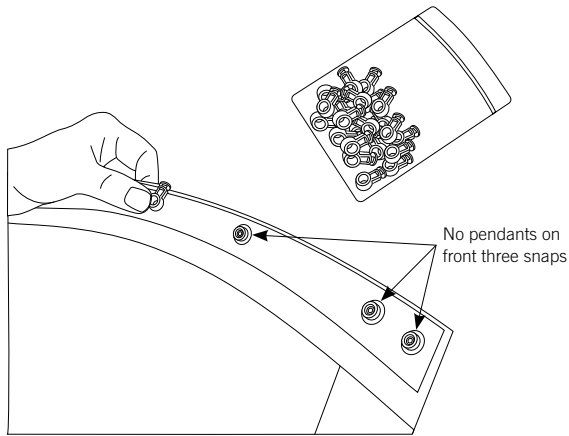
The finished bracket is now attached to rod.



**Step 5: Attach pendants to the snap tape of the panels.**

Locate the pendants (provided in a separate bag).

Note the first three snaps will be attached to the butt master, so the first pendant will actually snap on the fourth snap from the leading edge.

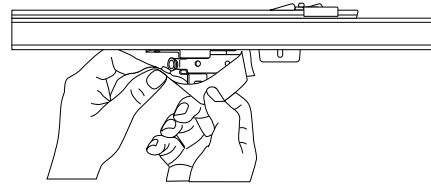
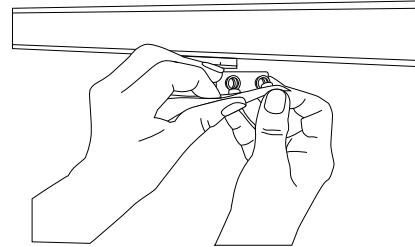


**Step 6: Snap the panel onto the master and carriers.**

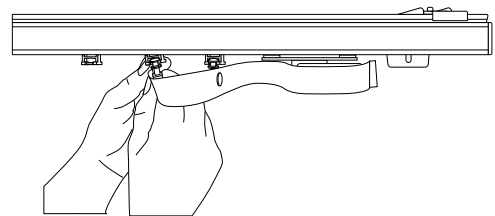
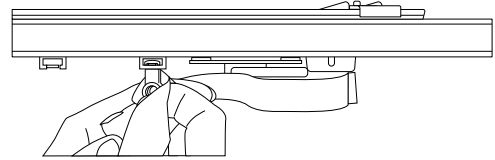
For demonstration purposes, we are showing the snap tape only in the illustrations below.

The first two snaps will attach to the front leading edge of the master.

The third snap will attach to the back of the master.

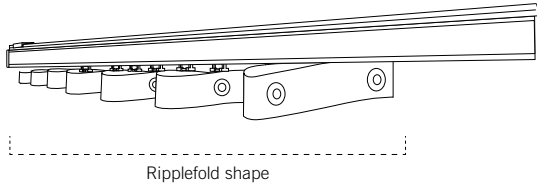


The fourth snap and pendant (and each snap and pendant afterwards) will slide and click into the carrier base. See illustrations below.



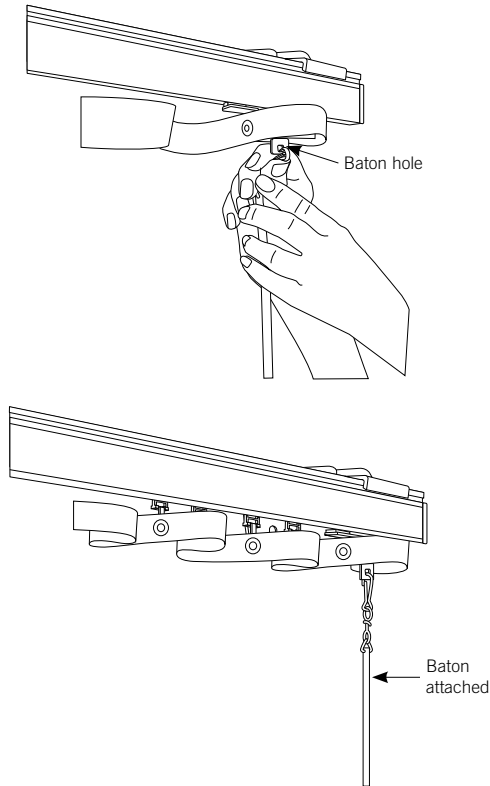
**Step 7: Dress the panels. They should serpentine back and forth as shown below.**

The folds of the panels should be dressed so the folds serpentine back and forth to create a soft wavy (ripplefold) shape.



**Step 8 : Attach the baton(s).**

Locate the baton hole on the bottom of the master. Snap baton into hole.



**Operating Your Natural Woven Panels**

Simply push the baton to open and pull to close the panels.

**Caring for Your Natural Woven Panels**

Your Natural Woven Panels will provide you with years of beauty and pleasure with minimal care and cleaning.

- Vacuum using a brush or dust head attachment.
- Dust lightly using a soft, clean cloth.
- Never immerse the panels in water or liquids of any type.

.....

**NOTE:**

Call us at 800.828.2500 if you have any questions.

Fabritec, LLC.  
7531 Coldwater Canyon Avenue  
North Hollywood, CA 91605  
t) 818.503.8300  
f) 818.503.8360  
[www.castec.com](http://www.castec.com)  
[www.fabritecdesigns.com](http://www.fabritecdesigns.com)